

## Product datasheet for **TA373159S**

### ABI3BP Rabbit Polyclonal Antibody

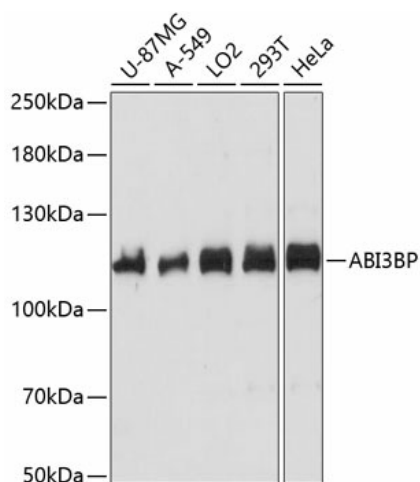
#### Product data:

Product Type:	Primary Antibodies
Applications:	WB
Recommended Dilution:	WB,1:500 - 1:2000
Reactivity:	Human
Modifications:	Unmodified
Host:	Rabbit
Isotype:	IgG
Clonality:	Polyclonal
Immunogen:	Recombinant fusion protein containing a sequence corresponding to amino acids 29-280 of human ABI3BP (NP_056244.2).
Formulation:	Buffer: PBS with 0.02% sodium azide,50% glycerol,pH7.3.
Concentration:	lot specific
Purification:	Affinity purification
Conjugation:	Unconjugated
Storage:	Store at -20°C. Avoid freeze / thaw cycles.
Stability:	Shelf life: one year from despatch.
Predicted Protein Size:	53kDa/72kDa/86kDa/118kDa
Gene Name:	ABI family member 3 binding protein
Database Link:	<a href="#">Entrez Gene 25890 Human Q7Z7G0</a>
Synonyms:	DKFZP586L2024; FLJ41743; FLJ41754; NESHBP; TARSH



[View online »](#)

## Product images:



Western blot analysis of extracts of various cell lines, using ABI3BP antibody ([TA373159]) at 1:1000 dilution. | Secondary antibody: HRP Goat Anti-Rabbit IgG (H+L) at 1:10000 dilution. | Lysates/proteins: 25ug per lane. | Blocking buffer: 3% nonfat dry milk in TBST. | Detection: ECL Basic Kit . | Exposure time: 20s.