

Product datasheet for **TA373133S**

ABCB8 Rabbit Polyclonal Antibody

Product data:

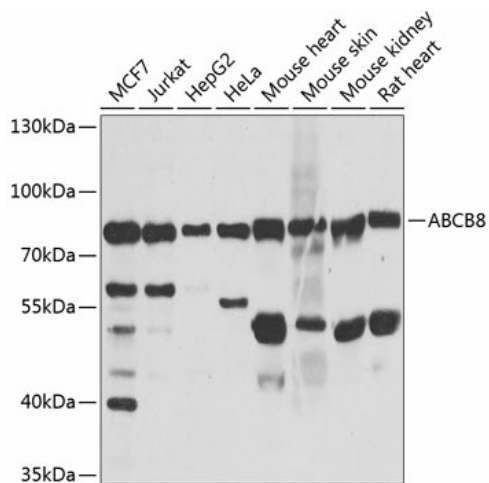
Product Type:	Primary Antibodies
Applications:	ICC/IF, IHC, WB
Recommended Dilution:	WB,1:500 - 1:2000 IHC,1:50 - 1:100 IF,1:50 - 1:100
Reactivity:	Human, Mouse, Rat
Modifications:	Unmodified
Host:	Rabbit
Isotype:	IgG
Clonality:	Polyclonal
Immunogen:	Recombinant fusion protein containing a sequence corresponding to amino acids 469-718 of human ABCB8 (NP_009119.2).
Formulation:	Buffer: PBS with 0.02% sodium azide,50% glycerol,pH7.3.
Concentration:	lot specific
Purification:	Affinity purification
Conjugation:	Unconjugated
Storage:	Store at -20°C. Avoid freeze / thaw cycles.
Stability:	Shelf life: one year from despatch.
Predicted Protein Size:	59kDa/68kDa/75kDa/78kDa/79kDa
Gene Name:	ATP binding cassette subfamily B member 8
Database Link:	Entrez Gene 11194 Human Q9NUT2
Background:	This nuclear gene encodes a multi-pass membrane protein that is targeted to the mitochondrial inner membrane. The encoded protein is an ATP-dependent transporter that may mediate the passage of organic and inorganic molecules out of the mitochondria. Loss of function of the related gene in mouse results in a disruption of iron homeostasis between the mitochondria and cytosol. Alternative splicing results in multiple transcript variants.



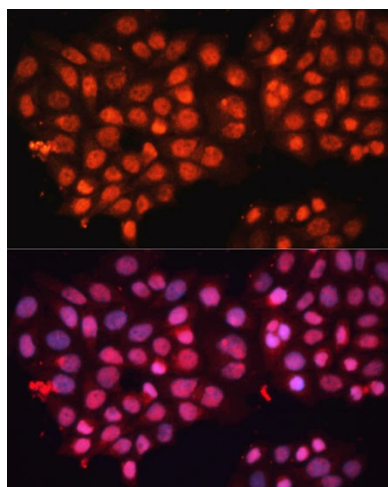
[View online »](#)

Synonyms: EST328128; M-ABC1; MABC1

Product images:



Western blot analysis of extracts of various cell lines, using ABCB8 antibody ([TA373133]) at 1:1000 dilution. | Secondary antibody: HRP Goat Anti-Rabbit IgG (H+L) at 1:10000 dilution. | Lysates/proteins: 25ug per lane. | Blocking buffer: 3% nonfat dry milk in TBST. | Detection: ECL Basic Kit . | Exposure time: 5s.



Immunofluorescence analysis of HeLa cells using ABCB8 Polyclonal Antibody ([TA373133]) at dilution of 1:100 (40x lens). Blue: DAPI for nuclear staining.