

Product datasheet for TA373124S

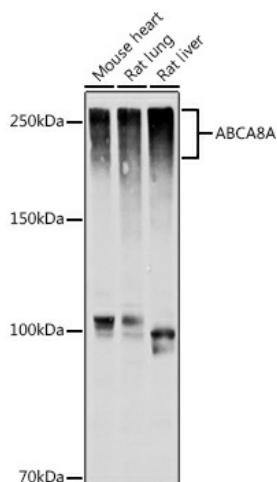
Abca8a Rabbit Polyclonal Antibody

Product data:

Product Type:	Primary Antibodies
Applications:	ELISA, IHC, WB
Recommended Dilution:	WB, 1:500 - 1:1000 IHC-P, 1:50 - 1:200 ELISA, Recommended starting concentration is 1 µg/mL. Please optimize the concentration based on your specific assay requirements.
Reactivity:	Human, Mouse, Rat
Modifications:	Unmodified
Host:	Rabbit
Isotype:	IgG
Clonality:	Polyclonal
Formulation:	Buffer: PBS with 0.02% sodium azide, 50% glycerol, pH 7.3.
Concentration:	lot specific
Purification:	Affinity purification
Conjugation:	Unconjugated
Storage:	Store at -20°C. Avoid freeze / thaw cycles.
Stability:	Shelf life: one year from despatch.
Predicted Protein Size:	184kDa
Gene Name:	ATP-binding cassette, sub-family A (ABC1), member 8a
Database Link:	Entrez Gene 217258 Mouse Q8K442
Background:	Predicted to enable ABC-type xenobiotic transporter activity and lipid transporter activity. Predicted to be involved in several processes, including cholesterol efflux; positive regulation of cholesterol efflux; and sphingomyelin biosynthetic process. Predicted to be located in endoplasmic reticulum and plasma membrane. Predicted to be active in intracellular membrane-bounded organelle. Is expressed in telencephalon. Orthologous to human ABCA8 (ATP binding cassette subfamily A member 8).
Synonyms:	Abca8a


[View online »](#)

Product images:



Western blot analysis of various lysates using ABCA8A Rabbit pAb ([TA373124]) at 1:1000 dilution.

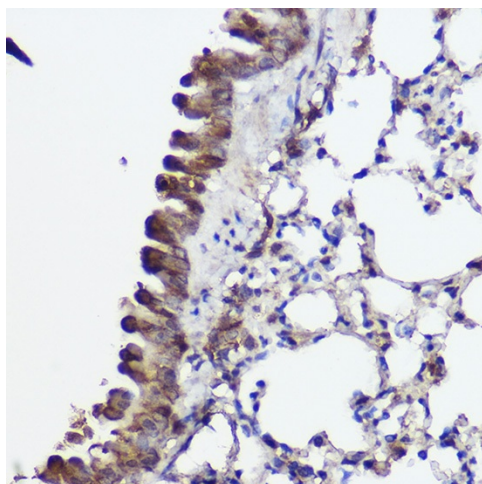
Secondary antibody: HRP-conjugated Goat anti-Rabbit IgG (H+L) (AS014) at 1:10000 dilution.

Lysates/proteins: 25µg per lane.

Blocking buffer: 3% nonfat dry milk in TBST.

Detection: ECL Basic Kit (RM00020).

Exposure time: 10s.



Immunohistochemistry analysis of paraffin-embedded Mouse lung using ABCA8A Rabbit pAb ([TA373124]) at dilution of 1:100 (40x lens). High pressure antigen retrieval performed with 0.01M Citrate Bufferr (pH 6.0) prior to IHC staining.