

## Product datasheet for **TA373113**

### **C20orf4 (AAR2) Rabbit Polyclonal Antibody**

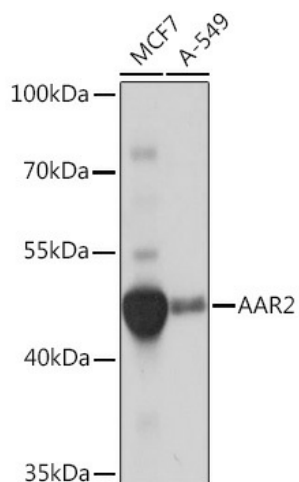
#### **Product data:**

Product Type:	Primary Antibodies
Applications:	ICC/IF, WB
Recommended Dilution:	WB,1:500 - 1:2000 IF,1:50 - 1:200
Reactivity:	Human, Mouse
Host:	Rabbit
Isotype:	IgG
Clonality:	Polyclonal
Immunogen:	Recombinant protein of human AAR2.
Formulation:	Buffer: PBS with 0.02% sodium azide,50% glycerol,pH7.3.
Concentration:	lot specific
Purification:	Affinity purification
Conjugation:	Unconjugated
Storage:	Store at -20°C. Avoid freeze / thaw cycles.
Stability:	Shelf life: one year from despatch.
Gene Name:	AAR2 splicing factor homolog
Database Link:	<a href="#">Entrez Gene 25980 Human Q9Y312</a>
Background:	This gene encodes the homolog of the yeast A1-alpha2 repressin protein that is involved in mRNA splicing. Alternately spliced transcript variants have been found for this gene. [provided by RefSeq, Dec 2012]
Synonyms:	C20orf4; CGI-23



[View online »](#)

## Product images:



Western blot analysis of extracts of various cell lines, using AAR2 Rabbit pAb (TA373113) at 1:1000 dilution. | Secondary antibody: HRP Goat Anti-Rabbit IgG (H+L) at 1:10000 dilution. | Lysates/proteins: 25ug per lane. | Blocking buffer: 3% nonfat dry milk in TBST. | Detection: ECL Basic Kit . | Exposure time: 10s.