

Product datasheet for **TA373105S**

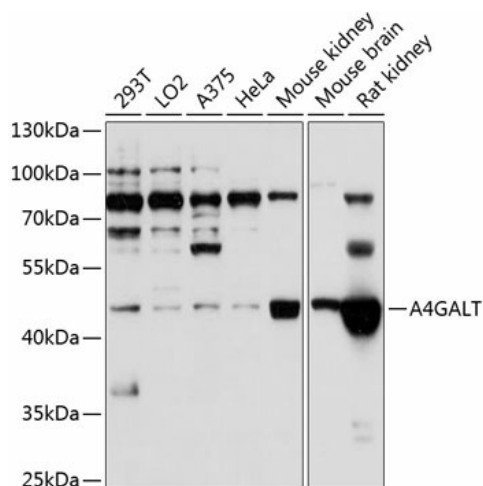
A4GALT Rabbit Polyclonal Antibody

Product data:

Product Type:	Primary Antibodies
Applications:	ELISA, WB
Recommended Dilution:	WB, 1:500 - 1:2000 ELISA, Recommended starting concentration is 1 µg/mL. Please optimize the concentration based on your specific assay requirements.
Reactivity:	Human, Mouse, Rat
Modifications:	Unmodified
Host:	Rabbit
Isotype:	IgG
Clonality:	Polyclonal
Formulation:	Buffer: PBS with 0.02% sodium azide, 50% glycerol, pH 7.3.
Concentration:	lot specific
Purification:	Affinity purification
Conjugation:	Unconjugated
Storage:	Store at -20°C. Avoid freeze / thaw cycles.
Stability:	Shelf life: one year from despatch.
Predicted Protein Size:	40kDa
Gene Name:	alpha 1,4-galactosyltransferase
Database Link:	Entrez Gene 53947 Human Q9NPC4
Background:	The protein encoded by this gene catalyzes the transfer of galactose to lactosylceramide to form globotriaosylceramide, which has been identified as the P(k) antigen of the P blood group system. This protein, a type II membrane protein found in the Golgi, is also required for the synthesis of the bacterial verotoxins receptor. Alternatively spliced transcript variants have been found for this gene.
Synonyms:	A4GALT1; A14GALT; Alpha-1,4-galactosyltransferase; Alpha-1,4-N-acetylglucosaminyltransferase; alpha4Gal-T1; OTTHUMP00000198433; OTTHUMP00000198434; P1; PK



[View online »](#)

Product images:

Western blot analysis of various lysates using A4GALT Rabbit pAb (TA373105S) at 1:1000 dilution.

Secondary antibody: HRP-conjugated Goat anti-Rabbit IgG (H+L) (AS014) at 1:10000 dilution.

Lysates/proteins: 25µg per lane.

Blocking buffer: 3% nonfat dry milk in TBST.

Detection: ECL Basic Kit (RM00020).

Exposure time: 20s.