

Product datasheet for **TA373104**

A2ML1 Rabbit Polyclonal Antibody

Product data:

Product Type:	Primary Antibodies
Applications:	WB
Recommended Dilution:	WB,1:500 - 1:2000
Reactivity:	Human, Rat
Modifications:	Unmodified
Host:	Rabbit
Isotype:	IgG
Clonality:	Polyclonal
Immunogen:	A synthetic peptide of Human A2ML1.
Formulation:	Buffer: PBS with 0.02% sodium azide,50% glycerol,pH7.3.
Concentration:	lot specific
Purification:	Affinity purification
Conjugation:	Unconjugated
Storage:	Store at -20°C. Avoid freeze / thaw cycles.
Stability:	Shelf life: one year from despatch.
Gene Name:	alpha-2-macroglobulin like 1
Database Link:	Entrez Gene 144568 Human A8K2U0

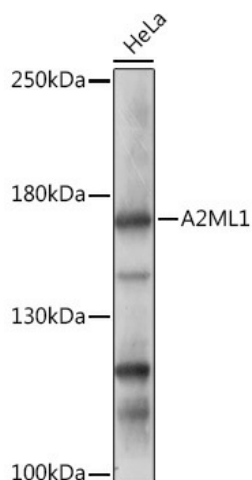
Background: This gene encodes a member of the alpha-macroglobulin superfamily. The encoded protein is thought to be an N-glycosylated monomeric protein that acts as an inhibitor of several proteases. It has been shown to form covalent interactions with proteases, and has been reported as the p170 antigen recognized by autoantibodies in the autoimmune disease paraneoplastic pemphigus (PNP; PMID:20805888). Mutations in these gene have also been associated with some cases of Noonan syndrome (NS; PMID:24939586) as well as some cases of otitis media (PMID:26121085). Alternative splicing results in multiple transcript variants encoding different isoforms. [provided by RefSeq, Aug 2015]

Synonyms: CPAMD9; DKFZp686C1729; DKFZp686D2011; DKFZp686G1812; DKFZp686L1821; DKFZp686O1010; FLJ16045; FLJ25179; FLJ39129; FLJ41597; FLJ41598; FLJ41607



[View online »](#)

Product images:



Western blot analysis of extracts of HeLa cells, using A2ML1 Rabbit pAb (TA373104) at 1:1000 dilution. | Secondary antibody: HRP Goat Anti-Rabbit IgG (H+L) at 1:10000 dilution. | Lysates/proteins: 25ug per lane. | Blocking buffer: 3% nonfat dry milk in TBST. | Detection: ECL Basic Kit . | Exposure time: 5min.