

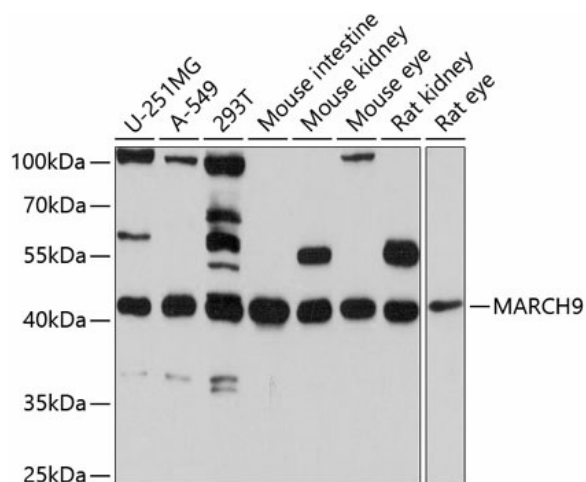
Product datasheet for TA373090S

MARCHF9 Rabbit Polyclonal Antibody

Product data:

Product Type:	Primary Antibodies
Applications:	ELISA, WB
Recommended Dilution:	WB, 1:500 - 1:1000 ELISA, Recommended starting concentration is 1 µg/mL. Please optimize the concentration based on your specific assay requirements.
Reactivity:	Human
Modifications:	Unmodified
Host:	Rabbit
Isotype:	IgG
Clonality:	Polyclonal
Formulation:	Buffer: PBS with 0.02% sodium azide, 50% glycerol, pH 7.3.
Concentration:	lot specific
Purification:	Affinity purification
Conjugation:	Unconjugated
Storage:	Store at -20°C. Avoid freeze / thaw cycles.
Stability:	Shelf life: one year from despatch.
Predicted Protein Size:	38kDa
Gene Name:	membrane associated ring-CH-type finger 9
Database Link:	Entrez Gene 92979 Human Q86YJ5
Background:	MARCH9 is a member of the MARCH family of membrane-bound E3 ubiquitin ligases (EC 6.3.2.19). MARCH enzymes add ubiquitin (see MIM 191339) to target lysines in substrate proteins, thereby signaling their vesicular transport between membrane compartments. MARCH9 induces internalization of several membrane glycoproteins and directs them to the endosomal compartment (Bartee et al., 2004 [PubMed 14722266]; Hoer et al., 2007 [PubMed 17174307]).
Synonyms:	FLJ36578; MARCH-IX; RNF179


[View online »](#)

Product images:

Western blot analysis of lysates from 293T cells