

Product datasheet for **TA373089**

MARCHF8 Rabbit Polyclonal Antibody

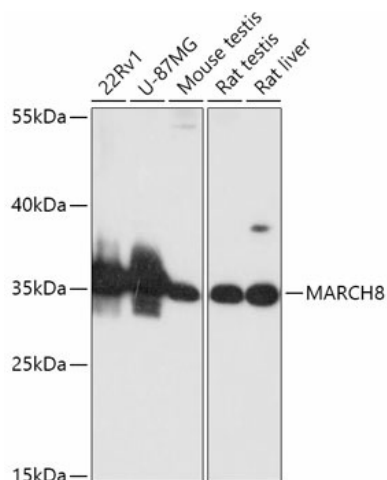
Product data:

Product Type:	Primary Antibodies
Applications:	WB
Recommended Dilution:	WB,1:500 - 1:2000
Reactivity:	Human, Mouse, Rat
Modifications:	Unmodified
Host:	Rabbit
Isotype:	IgG
Clonality:	Polyclonal
Immunogen:	Recombinant fusion protein containing a sequence corresponding to amino acids 232-291 of human MARCH8 (NP_659458.2).
Formulation:	Buffer: PBS with 0.02% sodium azide,50% glycerol,pH7.3.
Concentration:	lot specific
Purification:	Affinity purification
Conjugation:	Unconjugated
Storage:	Store at -20°C. Avoid freeze / thaw cycles.
Stability:	Shelf life: one year from despatch.
Predicted Protein Size:	32kDa/63kDa
Gene Name:	membrane associated ring-CH-type finger 8
Database Link:	Entrez Gene 220972 Human Q5T0T0
Background:	MARCH8 is a member of the MARCH family of membrane-bound E3 ubiquitin ligases (EC 6.3.2.19). MARCH enzymes add ubiquitin (see MIM 191339) to target lysines in substrate proteins, thereby signaling their vesicular transport between membrane compartments. MARCH8 induces the internalization of several membrane glycoproteins (Goto et al., 2003 [PubMed 12582153]; Bartee et al., 2004 [PubMed 14722266]).
Synonyms:	c-MIR; MARCH-VIII; MIR; RNF178



[View online »](#)

Product images:



Western blot analysis of extracts of various cell lines, using MARCH8 antibody (TA373089) at 1:1000 dilution. | Secondary antibody: HRP Goat Anti-Rabbit IgG (H+L) at 1:10000 dilution. | Lysates/proteins: 25ug per lane. | Blocking buffer: 3% nonfat dry milk in TBST. | Detection: ECL Basic Kit . | Exposure time: 60s.