

Product datasheet for **TA373073S**

VGLL3 Rabbit Polyclonal Antibody

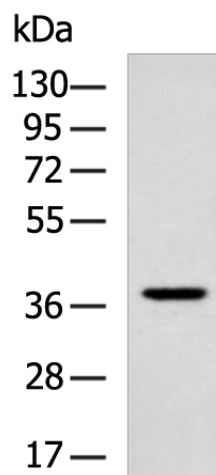
Product data:

Product Type:	Primary Antibodies
Applications:	WB
Recommended Dilution:	WB: 500-2000 WB positive control: LOVO cell lysate
Reactivity:	Human, Mouse
Host:	Rabbit
Isotype:	IgG
Clonality:	Polyclonal
Immunogen:	Synthetic peptide of human VGLL3
Formulation:	pH7.4 PBS, 0.05% NaN ₃ , 40% Glycerol
Concentration:	lot specific
Purification:	Antigen affinity purification
Conjugation:	Unconjugated
Storage:	Store at -20°C.
Stability:	1 year
Predicted Protein Size:	36 kDa
Gene Name:	vestigial like family member 3
Database Link:	Entrez Gene 389136 Human A8MV65
Background:	May act as a specific coactivator for the mammalian TEFs.
Synonyms:	DKFZp686O1845; FLJ38507; VGL-3; VGL3



[View online »](#)

Product images:



Gel: 8%SDS-PAGE
Lysate: 40 μ g
Lane: LOVO cell lysate
Primary antibody: [TA373073] (VGLL3 Antibody)
at dilution 1/550
Secondary antibody: Goat anti rabbit IgG at
1/5000 dilution
Exposure time: 2 minutes