

Product datasheet for **TA373072S**

ABHD6 Rabbit Polyclonal Antibody

Product data:

Product Type:	Primary Antibodies
Applications:	WB
Recommended Dilution:	WB: 500-2000 WB positive control: LOVO cell lysate
Reactivity:	Human, Mouse, Rat
Host:	Rabbit
Isotype:	IgG
Clonality:	Polyclonal
Immunogen:	Synthetic peptide of human ABHD6
Formulation:	pH7.4 PBS, 0.05% NaN ₃ , 40% Glycerol
Concentration:	lot specific
Purification:	Antigen affinity purification
Conjugation:	Unconjugated
Storage:	Store at -20°C.
Stability:	1 year
Predicted Protein Size:	38 kDa
Gene Name:	abhydrolase domain containing 6
Database Link:	Entrez Gene 57406 Human Q9BV23

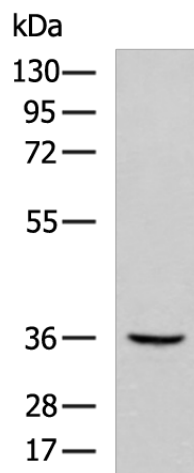
Background: Lipase that preferentially hydrolysis medium-chain saturated monoacylglycerols including 2-arachidonoylglycerol. Through 2-arachidonoylglycerol degradation may regulate endocannabinoid signaling pathways. Also has a lysophosphatidyl lipase activity with a preference for lysophosphatidylglycerol among other lysophospholipids. Also able to degrade bis(monoacylglycerol)phosphate (BMP) and constitutes the major enzyme for BMP catabolism. BMP, also known as lysobisphosphatidic acid, is enriched in late endosomes and lysosomes and plays a key role in the formation of intraluminal vesicles and in lipid sorting.

Synonyms: ABHD6



[View online »](#)

Product images:



Gel: 8%SDS-PAGE
Lysate: 40 μ g
Lane: LOVO cell lysate
Primary antibody: [TA373072] (ABHD6 Antibody)
at dilution 1/400
Secondary antibody: Goat anti rabbit IgG at
1/5000 dilution
Exposure time: 90 seconds