

Product datasheet for **TA373063**

ABCA1 Rabbit Polyclonal Antibody

Product data:

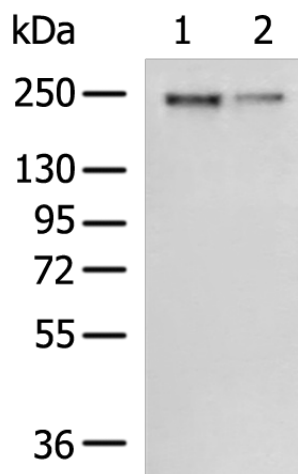
Product Type:	Primary Antibodies
Applications:	WB
Recommended Dilution:	WB: 200-1000 WB positive control: Human bladder transitional cell carcinoma grade 2-3 tissue, Human bladder transitional cell carcinoma cancer next level 2-3 tissue lysates
Reactivity:	Human, Mouse
Host:	Rabbit
Isotype:	IgG
Clonality:	Polyclonal
Immunogen:	Synthetic peptide of human ABCA1
Formulation:	pH7.4 PBS, 0.05% NaN ₃ , 40% Glycerol
Concentration:	lot specific
Purification:	Antigen affinity purification
Conjugation:	Unconjugated
Storage:	Store at -20°C.
Stability:	1 year
Predicted Protein Size:	254 kDa
Gene Name:	ATP binding cassette subfamily A member 1
Database Link:	Entrez Gene 19 Human O95477
Background:	The membrane-associated protein encoded by this gene is a member of the superfamily of ATP-binding cassette (ABC) transporters. ABC proteins transport various molecules across extra- and intracellular membranes. ABC genes are divided into seven distinct subfamilies (ABC1, MDR/TAP, MRP, ALD, OABP, GCN20, White). This protein is a member of the ABC1 subfamily. Members of the ABC1 subfamily comprise the only major ABC subfamily found exclusively in multicellular eukaryotes. With cholesterol as its substrate, this protein functions as a cholesterol efflux pump in the cellular lipid removal pathway. Mutations in this gene have been associated with Tangier's disease and familial high-density lipoprotein deficiency.



[View online »](#)

Synonyms: ABC-1; ABC1; CERP; FLJ14958; HDLDT1; membrane-bound; MGC164864; MGC165011; TGD

Product images:



Gel: 6%SDS-PAGE

Lysate: 40 μ g

Lane 1-2: Human bladder transitional cell carcinoma grade 2-3 tissue

Human bladder transitional cell carcinoma cancer next level 2-3 tissue lysates

Primary antibody: TA373063 (ABCA1 Antibody) at dilution 1/400

Secondary antibody: Goat anti rabbit IgG at 1/5000 dilution

Exposure time: 1 minute