

## Product datasheet for **TA373059S**

### Syntrophin alpha 1 (SNTA1) Rabbit Polyclonal Antibody

#### Product data:

Product Type:	Primary Antibodies
Applications:	WB
Recommended Dilution:	WB: 500-2000 WB positive control: HepG2 and MCF7 cell, Human heart tissue, 293T and Jurkat cell lysates
Reactivity:	Human, Mouse
Host:	Rabbit
Isotype:	IgG
Clonality:	Polyclonal
Immunogen:	Synthetic peptide of human SNTA1
Formulation:	pH7.4 PBS, 0.05% NaN <sub>3</sub> , 40% Glycerol
Concentration:	lot specific
Purification:	Antigen affinity purification
Conjugation:	Unconjugated
Storage:	Store at -20°C.
Stability:	1 year
Predicted Protein Size:	54 kDa
Gene Name:	syntrophin alpha 1
Database Link:	<a href="#">Entrez Gene 6640 Human Q13424</a>



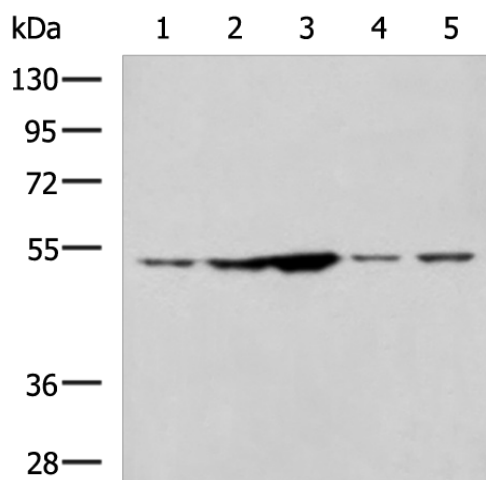
[View online »](#)

**Background:**

Syntrophins are cytoplasmic peripheral membrane scaffold proteins that are components of the dystrophin-associated protein complex. This gene is a member of the syntrophin gene family and encodes the most common syntrophin isoform found in cardiac tissues. The N-terminal PDZ domain of this syntrophin protein interacts with the C-terminus of the pore-forming alpha subunit (SCN5A) of the cardiac sodium channel Nav1.5. This protein also associates cardiac sodium channels with the nitric oxide synthase-PMCA4b (plasma membrane Ca-ATPase subtype 4b) complex in cardiomyocytes. This gene is a susceptibility locus for Long-QT syndrome (LQT) - an inherited disorder associated with sudden cardiac death from arrhythmia - and sudden infant death syndrome (SIDS). This protein also associates with dystrophin and dystrophin-related proteins at the neuromuscular junction and alters intracellular calcium ion levels in muscle tissue.

**Synonyms:**

dj1187J4.5; LQT12; SNT1; Syntrophin-1; TACIP1

**Product images:**

Gel: 8%SDS-PAGE

Lysate: 40 µg

Lane 1-5: HepG2 and MCF7 cell

Human heart tissue

293T and Jurkat cell lysates

Primary antibody: [TA373059] (SNTA1 Antibody)  
at dilution 1/1350

Secondary antibody: Goat anti rabbit IgG at  
1/5000 dilution

Exposure time: 3 minutes