

Product datasheet for **TA373057**

SESN2 Rabbit Polyclonal Antibody

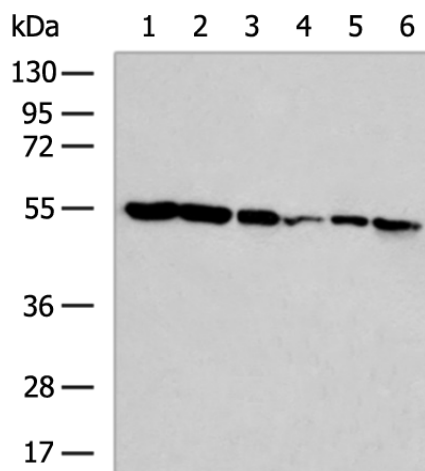
Product data:

Product Type:	Primary Antibodies
Applications:	WB
Recommended Dilution:	WB: 500-2000 WB positive control: Human cerebrum tissue, Human cerebella tissue, K562 cell, Hela cell, NIH/3T3 cell, A549 cell lysates
Reactivity:	Human, Mouse
Host:	Rabbit
Isotype:	IgG
Clonality:	Polyclonal
Immunogen:	Synthetic peptide of human SESN2
Formulation:	pH7.4 PBS, 0.05% NaN ₃ , 40% Glycerol
Concentration:	lot specific
Purification:	Antigen affinity purification
Conjugation:	Unconjugated
Storage:	Store at -20°C.
Stability:	1 year
Predicted Protein Size:	54 kDa
Gene Name:	sestrin 2
Database Link:	Entrez Gene 83667 Human P58004
Background:	This gene encodes a member of the sestrin family of PA26-related proteins. The encoded protein may function in the regulation of cell growth and survival. This protein may be involved in cellular response to different stress conditions.
Synonyms:	DKFZp761M0212; DKFZp761M02121; HI95; SES2; SEST2



[View online »](#)

Product images:



Gel: 8%SDS-PAGE

Lysate: 40 μ g

Lane 1-6: Human cerebrum tissue

Human cerebella tissue

K562 cell

Hela cell

NIH/3T3 cell

A549 cell lysates

Primary antibody: TA373057 (SESN2 Antibody) at dilution 1/600

Secondary antibody: Goat anti rabbit IgG at 1/5000 dilution

Exposure time: 1 minute