

Product datasheet for **TA373050S**

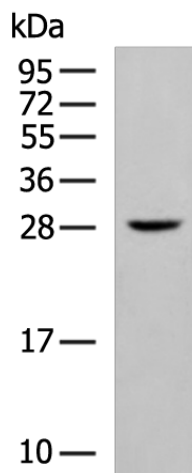
KLRF1 Rabbit Polyclonal Antibody

Product data:

Product Type:	Primary Antibodies
Applications:	WB
Recommended Dilution:	WB: 500-2000 WB positive control: Human bladder transitional cell carcinoma grade 2-3 tissue lysate
Reactivity:	Human
Host:	Rabbit
Isotype:	IgG
Clonality:	Polyclonal
Immunogen:	Synthetic peptide of human KLRF1
Formulation:	pH7.4 PBS, 0.05% NaN ₃ , 40% Glycerol
Concentration:	lot specific
Purification:	Antigen affinity purification
Conjugation:	Unconjugated
Storage:	Store at -20°C.
Stability:	1 year
Predicted Protein Size:	27 kDa
Gene Name:	killer cell lectin like receptor F1
Database Link:	Entrez Gene 51348 Human Q9NZS2
Background:	KLRF1, an activating homodimeric C-type lectin-like receptor (CTLR), is expressed on nearly all natural killer (NK) cells and stimulates their cytotoxicity and cytokine release.
Synonyms:	CLEC5C; MGC119907; MGC119908; MGC119909; ML; NKp80

[View online »](#)

Product images:



Gel: 12%SDS-PAGE
 Lysate: 40 µg
 Lane: Human bladder transitional cell carcinoma grade 2-3 tissue lysate
 Primary antibody: [TA373050] (KLRF1 Antibody) at dilution 1/700
 Secondary antibody: Goat anti rabbit IgG at 1/5000 dilution
 Exposure time: 30 seconds