

## Product datasheet for **TA373047**

### DIPK2B Rabbit Polyclonal Antibody

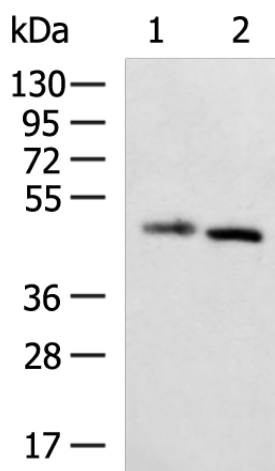
#### Product data:

Product Type:	Primary Antibodies
Applications:	WB
Recommended Dilution:	WB: 500-2000 WB positive control: Human cerebrum tissue, Human placenta tissue lysates
Reactivity:	Human, Mouse
Host:	Rabbit
Isotype:	IgG
Clonality:	Polyclonal
Immunogen:	Synthetic peptide of human DIPK2B
Formulation:	pH7.4 PBS, 0.05% NaN <sub>3</sub> , 40% Glycerol
Concentration:	lot specific
Purification:	Antigen affinity purification
Conjugation:	Unconjugated
Storage:	Store at -20°C.
Stability:	1 year
Predicted Protein Size:	49 kDa
Gene Name:	chromosome X open reading frame 36
Database Link:	<a href="#">Entrez Gene 79742 Human Q9H7Y0</a>
Background:	Chromosome X open reading frame 36 (CXorf36) is a gene that in humans encodes a protein "hypothetical protein LOC79742". This protein has a function that is not currently very well understood. CXorf36 is shown to be expressed ubiquitously at low levels in various tissues throughout the body. It is expressed highly in the ciliary ganglion, ovary, and uterus corpus. However, highest expression is seen in the trigeminal ganglion tissue.
Synonyms:	4930578C19Rik; bA435K1.1; DKFZp313K0825; EPQL1862; FLJ14103; FLJ55198; FLJ55198;; hCG1981635; PRO3743



[View online »](#)

## Product images:



Gel: 8%SDS-PAGE  
Lysate: 40  $\mu$ g  
Lane 1-2: Human cerebrum tissue  
Human placenta tissue lysates  
Primary antibody: TA373047 (DIPK2B Antibody) at  
dilution 1/400  
Secondary antibody: Goat anti rabbit IgG at  
1/5000 dilution  
Exposure time: 3 minutes