

## Product datasheet for **TA373045S**

### NCR1 Rabbit Polyclonal Antibody

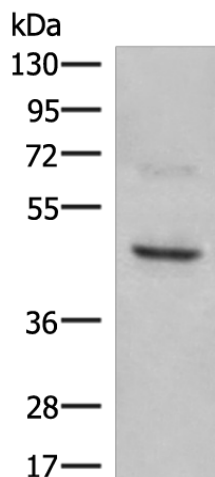
#### Product data:

Product Type:	Primary Antibodies
Applications:	WB
Recommended Dilution:	WB: 500-2000 WB positive control: SKOV3 cell lysate
Reactivity:	Human
Host:	Rabbit
Isotype:	IgG
Clonality:	Polyclonal
Immunogen:	Synthetic peptide of human NCR1
Formulation:	pH7.4 PBS, 0.05% NaN <sub>3</sub> , 40% Glycerol
Concentration:	lot specific
Purification:	Antigen affinity purification
Conjugation:	Unconjugated
Storage:	Store at -20°C.
Stability:	1 year
Predicted Protein Size:	34 kDa
Gene Name:	natural cytotoxicity triggering receptor 1
Database Link:	<a href="#">Entrez Gene 9437 Human O76036</a>
Background:	Cytotoxicity-activating receptor that may contribute to the increased efficiency of activated natural killer (NK) cells to mediate tumor cell lysis. When LY94 is expressed in COS-7 cells, anti-NKp46 immunoprecipitates a 46-kD surface molecule. Northern blot analysis revealed weak expression of a major transcript of 3.4 kb in spleen but in no other human tissue. Further analysis, with RT-PCR confirmation, in various lymphoid and myelomonocytic cells revealed that LY94 expression is confined to NK cells.
Synonyms:	CD335; FLJ99094; hNKp46; LY94; NK-p46; NKP46



[View online »](#)

## Product images:



Gel: 8%SDS-PAGE

Lysate: 40  $\mu$ g

Lane: SKOV3 cell lysate

Primary antibody: [TA373045] (NCR1 Antibody) at dilution 1/350

Secondary antibody: Goat anti rabbit IgG at 1/8000 dilution

Exposure time: 1 minute