

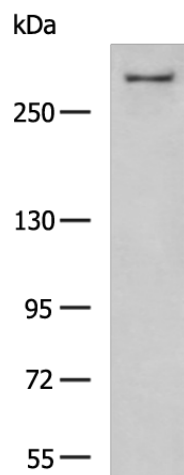
Product datasheet for **TA373042**

ATR Rabbit Polyclonal Antibody

Product data:

Product Type:	Primary Antibodies
Applications:	WB
Recommended Dilution:	WB: 200-1000 WB positive control: A549 cell lysate
Reactivity:	Human
Host:	Rabbit
Isotype:	IgG
Clonality:	Polyclonal
Immunogen:	Synthetic peptide of human ATR
Formulation:	pH7.4 PBS, 0.05% NaN ₃ , 40% Glycerol
Concentration:	lot specific
Purification:	Antigen affinity purification
Conjugation:	Unconjugated
Storage:	Store at -20°C.
Stability:	1 year
Predicted Protein Size:	301 kDa
Gene Name:	ATR serine/threonine kinase
Database Link:	Entrez Gene 545 Human Q13535
Background:	The protein encoded by this gene is a serine/threonine kinase and DNA damage sensor, activating cell cycle checkpoint signaling upon DNA stress. The encoded protein can phosphorylate and activate several proteins involved in the inhibition of DNA replication and mitosis, and can promote DNA repair, recombination, and apoptosis. This protein is also important for fragile site stability and centrosome duplication. Defects in this gene are a cause of Seckel syndrome 1.
Synonyms:	FRP1; MEC1; SCKL; SCKL1

[View online »](#)

Product images:


Gel: 6%SDS-PAGE
 Lysate: 40 µg
 Lane: A549 cell lysate
 Primary antibody: TA373042 (ATR Antibody) at dilution 1/650
 Secondary antibody: Goat anti rabbit IgG at 1/5000 dilution
 Exposure time: 2 minutes