

## Product datasheet for **TA373039S**

### Relaxin 3 receptor 1 (RXFP3) Rabbit Polyclonal Antibody

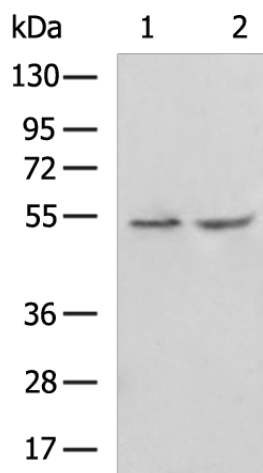
#### Product data:

Product Type:	Primary Antibodies
Applications:	WB
Recommended Dilution:	WB: 200-1000 WB positive control: Mouse skin tissue, A549 cell lysates
Reactivity:	Human, Mouse
Host:	Rabbit
Isotype:	IgG
Clonality:	Polyclonal
Immunogen:	Synthetic peptide of human RXFP3
Formulation:	pH7.4 PBS, 0.05% NaN <sub>3</sub> , 40% Glycerol
Concentration:	lot specific
Purification:	Antigen affinity purification
Conjugation:	Unconjugated
Storage:	Store at -20°C.
Stability:	1 year
Predicted Protein Size:	51 kDa
Gene Name:	relaxin/insulin like family peptide receptor 3
Database Link:	<a href="#">Entrez Gene 51289 Human Q9NSD7</a>
Background:	Receptor for RNL3/relaxin-3. Binding of the ligand inhibit cAMP accumulation.
Synonyms:	GPCR135; MGC141998; MGC142000; RLN3R1; RXFPR3; SALPR



[View online »](#)

## Product images:



Gel: 8%SDS-PAGE

Lysate: 40  $\mu$ g

Lane 1-2: Mouse skin tissue

A549 cell lysates

Primary antibody: [TA373039] (RXFP3 Antibody)  
at dilution 1/200

Secondary antibody: Goat anti rabbit IgG at  
1/5000 dilution

Exposure time: 10 seconds