

Product datasheet for **TA373032S**

VEGFA Rabbit Polyclonal Antibody

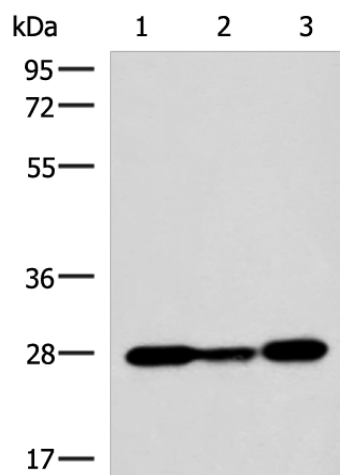
Product data:

Product Type:	Primary Antibodies
Applications:	WB
Recommended Dilution:	WB: 1000-5000 WB positive control: 293T, K562, NIH/3T3 cell lysates
Reactivity:	Human, Mouse
Host:	Rabbit
Isotype:	IgG
Clonality:	Polyclonal
Immunogen:	Synthetic peptide of human VEGFA
Formulation:	pH7.4 PBS, 0.05% NaN ₃ , 40% Glycerol
Concentration:	lot specific
Purification:	Antigen affinity purification
Conjugation:	Unconjugated
Storage:	Store at -20°C.
Stability:	1 year
Predicted Protein Size:	27 kDa
Gene Name:	vascular endothelial growth factor A
Database Link:	Entrez Gene 7422 Human P15692
Background:	This gene is a member of the PDGF/VEGF growth factor family and encodes a protein that is often found as a disulfide linked homodimer. This protein is a glycosylated mitogen that specifically acts on endothelial cells and has various effects, including mediating increased vascular permeability, inducing angiogenesis, vasculogenesis and endothelial cell growth, promoting cell migration, and inhibiting apoptosis.
Synonyms:	MGC70609; MVCD1; VEGF; VEGF-A; VPF



[View online »](#)

Product images:



Gel: 8%SDS-PAGE
Lysate: 40 μ g
Lane 1-3: 293T
K562
NIH/3T3 cell lysates
Primary antibody: [TA373032] (VEGFA Antibody)
at dilution 1/1150
Secondary antibody: Goat anti rabbit IgG at
1/5000 dilution
Exposure time: 5 seconds