

Product datasheet for **TA373031S**

MADH7 (SMAD7) Rabbit Polyclonal Antibody

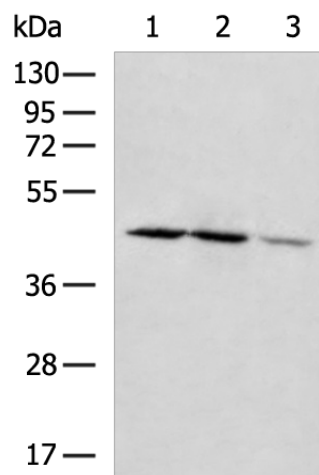
Product data:

Product Type:	Primary Antibodies
Applications:	WB
Recommended Dilution:	WB: 500-2000 WB positive control: Mouse heart tissue, SKOV3 cell, Mouse liver tissue lysates
Reactivity:	Human, Mouse, Rat
Host:	Rabbit
Isotype:	IgG
Clonality:	Polyclonal
Immunogen:	Synthetic peptide of human SMAD7
Formulation:	pH7.4 PBS, 0.05% NaN ₃ , 40% Glycerol
Concentration:	lot specific
Purification:	Antigen affinity purification
Conjugation:	Unconjugated
Storage:	Store at -20°C.
Stability:	1 year
Predicted Protein Size:	46 kDa
Gene Name:	SMAD family member 7
Database Link:	Entrez Gene 4092 Human O15105
Background:	The protein encoded by this gene is a nuclear protein that binds the E3 ubiquitin ligase SMURF2. Upon binding, this complex translocates to the cytoplasm, where it interacts with TGF-beta receptor type-1 (TGFB1), leading to the degradation of both the encoded protein and TGFB1. Expression of this gene is induced by TGFB1. Variations in this gene are a cause of susceptibility to colorectal cancer type 3 (CRC3). Several transcript variants encoding different isoforms have been found for this gene.
Synonyms:	CRC3; FLJ16482; hSMAD7; MADH7; MADH8



[View online »](#)

Product images:



Gel: 8%SDS-PAGE
Lysate: 40 μ g
Lane 1-3: Mouse heart tissue
SKOV3 cell
Mouse liver tissue lysates
Primary antibody: [TA373031] (SMAD7 Antibody)
at dilution 1/300
Secondary antibody: Goat anti rabbit IgG at
1/5000 dilution
Exposure time: 1 minute