

## Product datasheet for **TA373029**

### MYOD1 Rabbit Polyclonal Antibody

#### Product data:

Product Type:	Primary Antibodies
Applications:	WB
Recommended Dilution:	WB: 200-1000 WB positive control: NIH/3T3 cell lysate
Reactivity:	Human, Mouse, Rat
Host:	Rabbit
Isotype:	IgG
Clonality:	Polyclonal
Immunogen:	Synthetic peptide of human MYOD1
Formulation:	pH7.4 PBS, 0.05% NaN <sub>3</sub> , 40% Glycerol
Concentration:	lot specific
Purification:	Antigen affinity purification
Conjugation:	Unconjugated
Storage:	Store at -20°C.
Stability:	1 year
Predicted Protein Size:	35 kDa
Gene Name:	myogenic differentiation 1
Database Link:	<a href="#">Entrez Gene 4654 Human P15172</a>

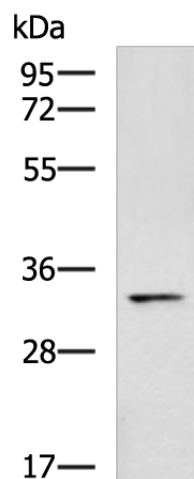
**Background:** This gene encodes a nuclear protein that belongs to the basic helix-loop-helix family of transcription factors and the myogenic factors subfamily. It regulates muscle cell differentiation by inducing cell cycle arrest, a prerequisite for myogenic initiation. The protein is also involved in muscle regeneration. It activates its own transcription which may stabilize commitment to myogenesis.

**Synonyms:** bHLHc1; Myf-3; MYF3; MYOD; PUM



[View online »](#)

## Product images:



Gel: 8%SDS-PAGE

Lysate: 40  $\mu$ g

Lane: NIH/3T3 cell lysate

Primary antibody: TA373029 (MYOD1 Antibody)  
at dilution 1/500

Secondary antibody: Goat anti rabbit IgG at  
1/5000 dilution

Exposure time: 30 seconds