

## Product datasheet for **TA373026S**

### CCN2 Rabbit Polyclonal Antibody

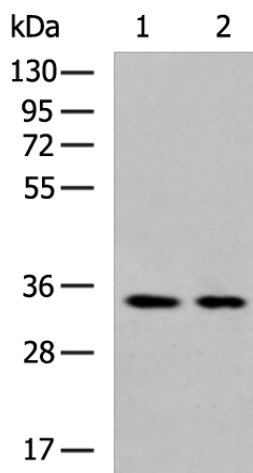
#### Product data:

Product Type:	Primary Antibodies
Applications:	WB
Recommended Dilution:	WB: 500-2000 WB positive control: Rat liver tissue and Mouse heart tissue lysates
Reactivity:	Human, Mouse, Rat
Host:	Rabbit
Isotype:	IgG
Clonality:	Polyclonal
Immunogen:	Synthetic peptide of human CCN2
Formulation:	pH7.4 PBS, 0.05% NaN <sub>3</sub> , 40% Glycerol
Concentration:	lot specific
Purification:	Antigen affinity purification
Conjugation:	Unconjugated
Storage:	Store at -20°C.
Stability:	1 year
Predicted Protein Size:	38 kDa
Gene Name:	connective tissue growth factor
Database Link:	<a href="#">Entrez Gene 1490 Human P29279</a>
Background:	The protein encoded by this gene is a mitogen that is secreted by vascular endothelial cells. The encoded protein plays a role in chondrocyte proliferation and differentiation, cell adhesion in many cell types, and is related to platelet-derived growth factor. Certain polymorphisms in this gene have been linked with a higher incidence of systemic sclerosis.
Synonyms:	CCN2; HCS24; IGFBP8; MGC102839; NOV2



[View online »](#)

## Product images:



Gel: 8%SDS-PAGE

Lysate: 40  $\mu$ g

Lane 1-2: Rat liver tissue and Mouse heart tissue lysates

Primary antibody: [TA373026] (CCN2 Antibody) at dilution 1/600

Secondary antibody: Goat anti rabbit IgG at 1/5000 dilution

Exposure time: 2 minutes