

Product datasheet for **TA373024S**

Activin A Receptor Type IB (ACVR1B) Rabbit Polyclonal Antibody

Product data:

Product Type:	Primary Antibodies
Applications:	WB
Recommended Dilution:	WB: 1000-5000 WB positive control: 293T cell lysate
Reactivity:	Human
Host:	Rabbit
Isotype:	IgG
Clonality:	Polyclonal
Immunogen:	Synthetic peptide of human ACVR1B
Formulation:	pH7.4 PBS, 0.05% NaN ₃ , 40% Glycerol
Concentration:	lot specific
Purification:	Antigen affinity purification
Conjugation:	Unconjugated
Storage:	Store at -20°C.
Stability:	1 year
Predicted Protein Size:	61 kDa
Gene Name:	activin A receptor type 1B
Database Link:	Entrez Gene 91 Human P36896

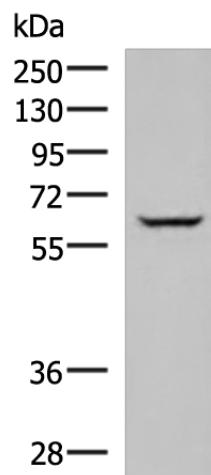
Background: This gene encodes an activin A type IB receptor. Activins are dimeric growth and differentiation factors which belong to the transforming growth factor-beta (TGF-beta) superfamily of structurally related signaling proteins. Activins signal through a heteromeric complex of receptor serine kinases which include at least two type I and two type II receptors. This protein is a type I receptor which is essential for signaling. Mutations in this gene are associated with pituitary tumors. Alternate splicing results in multiple transcript variants.

Synonyms: ACTR-IB; ACTRIB; ACVRLK4; ALK-4; ALK4; SKR2



[View online »](#)

Product images:



Gel: 8%SDS-PAGE

Lysate: 40 μ g

Lane: 293T cell lysate

Primary antibody: [TA373024] (ACVR1B Antibody)
at dilution 1/900

Secondary antibody: Goat anti rabbit IgG at
1/5000 dilution

Exposure time: 1 minute