

Product datasheet for **TA373024**

Activin A Receptor Type IB (ACVR1B) Rabbit Polyclonal Antibody

Product data:

| | |
|-------------------------|--|
| Product Type: | Primary Antibodies |
| Applications: | WB |
| Recommended Dilution: | WB: 1000-5000 WB positive control: 293T cell lysate |
| Reactivity: | Human |
| Host: | Rabbit |
| Isotype: | IgG |
| Clonality: | Polyclonal |
| Immunogen: | Synthetic peptide of human ACVR1B |
| Formulation: | pH7.4 PBS, 0.05% NaN ₃ , 40% Glycerol |
| Concentration: | lot specific |
| Purification: | Antigen affinity purification |
| Conjugation: | Unconjugated |
| Storage: | Store at -20°C. |
| Stability: | 1 year |
| Predicted Protein Size: | 61 kDa |
| Gene Name: | activin A receptor type 1B |
| Database Link: | Entrez Gene 91 Human P36896 |

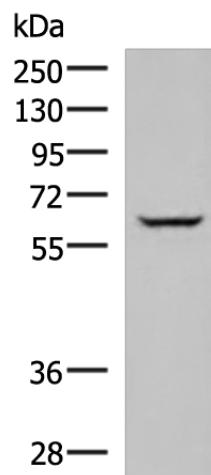
Background: This gene encodes an activin A type IB receptor. Activins are dimeric growth and differentiation factors which belong to the transforming growth factor-beta (TGF-beta) superfamily of structurally related signaling proteins. Activins signal through a heteromeric complex of receptor serine kinases which include at least two type I and two type II receptors. This protein is a type I receptor which is essential for signaling. Mutations in this gene are associated with pituitary tumors. Alternate splicing results in multiple transcript variants.

Synonyms: ACTR-IB; ACTRIB; ACVRLK4; ALK-4; ALK4; SKR2



[View online »](#)

Product images:



Gel: 8%SDS-PAGE

Lysate: 40 μ g

Lane: 293T cell lysate

Primary antibody: TA373024 (ACVR1B Antibody)
at dilution 1/900

Secondary antibody: Goat anti rabbit IgG at
1/5000 dilution

Exposure time: 1 minute