

## Product datasheet for **TA373014**

### ZKSCAN1 Rabbit Polyclonal Antibody

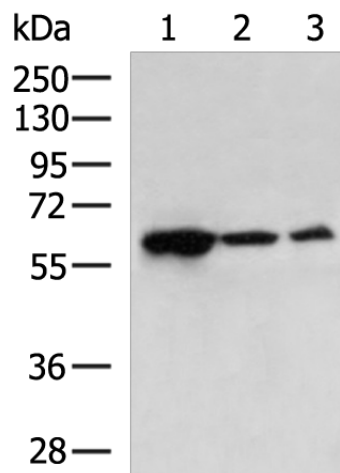
#### Product data:

Product Type:	Primary Antibodies
Applications:	WB
Recommended Dilution:	WB: 1000-5000 WB positive control: Raji cell, Human cerebrum tissue, Human cerebella tissue lysates
Reactivity:	Human, Mouse, Rat
Host:	Rabbit
Isotype:	IgG
Clonality:	Polyclonal
Immunogen:	Fusion protein of human ZKSCAN1
Formulation:	pH7.4 PBS, 0.05% NaN <sub>3</sub> , 40% Glycerol
Concentration:	lot specific
Purification:	Antigen affinity purification
Conjugation:	Unconjugated
Storage:	Store at -20°C.
Stability:	1 year
Predicted Protein Size:	64 kDa
Gene Name:	zinc finger with KRAB and SCAN domains 1
Database Link:	<a href="#">Entrez Gene 7586 Human P17029</a>
Background:	This gene encodes a member of the Kruppel C2H2-type zinc-finger family of proteins. This encoded protein may function as a transcription factor that regulates the expression of GABA type-A receptors in the brain. Transcripts from this gene have been shown to form stable and abundant circular RNAs. Elevated expression of this gene has been observed in gastric cancer and the encoded protein may stimulate migration and invasion of human gastric cancer cells.
Synonyms:	9130423L19Rik; KOX18; MGC138429; PHZ-37; ZNF36; ZNF139



[View online »](#)

## Product images:



Gel: 8%SDS-PAGE  
Lysate: 40  $\mu$ g  
Lane 1-3: Raji cell  
Human cerebrum tissue  
Human cerebella tissue lysates  
Primary antibody: TA373014 (ZKSCAN1 Antibody)  
at dilution 1/1000  
Secondary antibody: Goat anti rabbit IgG at  
1/5000 dilution  
Exposure time: 2 minutes