

## Product datasheet for **TA373012**

### FKBP6 Rabbit Polyclonal Antibody

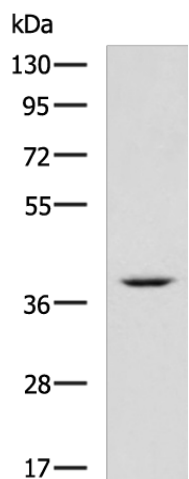
#### Product data:

Product Type:	Primary Antibodies
Applications:	WB
Recommended Dilution:	WB: 500-2000 WB positive control: Mouse heart tissue lysate
Reactivity:	Human, Mouse, Rat
Host:	Rabbit
Isotype:	IgG
Clonality:	Polyclonal
Immunogen:	Fusion protein of human FKBP6
Formulation:	pH7.4 PBS, 0.05% NaN <sub>3</sub> , 40% Glycerol
Concentration:	lot specific
Purification:	Antigen affinity purification
Conjugation:	Unconjugated
Storage:	Store at -20°C.
Stability:	1 year
Predicted Protein Size:	37 kDa
Gene Name:	FK506 binding protein 6
Database Link:	<a href="#">Entrez Gene 8468 Human O75344</a>
Background:	The protein encoded by this gene is a cis-trans peptidyl-prolyl isomerase that may function in immunoregulation and basic cellular processes involving protein folding and trafficking. This gene is located in a chromosomal region that is deleted in Williams-Beuren syndrome. Defects in this gene may cause male infertility. There are multiple pseudogenes for this gene located nearby on chromosome 7. Alternative splicing results in multiple transcript variants. [provided by RefSeq, Jul 2013]
Synonyms:	FKBP-36; FKBP36; MGC87179; PPIase; rotamase



[View online »](#)

## Product images:



Gel: 8%SDS-PAGE

Lysate: 40  $\mu$ g

Lane: Mouse heart tissue lysate

Primary antibody: TA373012 (FKBP6 Antibody) at dilution 1/1350

Secondary antibody: Goat anti rabbit IgG at 1/5000 dilution

Exposure time: 5 minutes