

## Product datasheet for **TA373006S**

### NDUFA1 Rabbit Polyclonal Antibody

#### Product data:

Product Type:	Primary Antibodies
Applications:	WB
Recommended Dilution:	WB: 500-2000 WB positive control: Mouse heart tissue, Mouse brain tissue, Rat liver tissue, Mouse kidney tissue lysates
Reactivity:	Human, Mouse, Rat
Host:	Rabbit
Isotype:	IgG
Clonality:	Polyclonal
Immunogen:	Fusion protein of human NDUFA1
Formulation:	pH7.4 PBS, 0.05% NaN <sub>3</sub> , 40% Glycerol
Concentration:	lot specific
Purification:	Antigen affinity purification
Conjugation:	Unconjugated
Storage:	Store at -20°C.
Stability:	1 year
Predicted Protein Size:	8 kDa
Gene Name:	NADH:ubiquinone oxidoreductase subunit A1
Database Link:	<a href="#">Entrez Gene 4694 Human O15239</a>



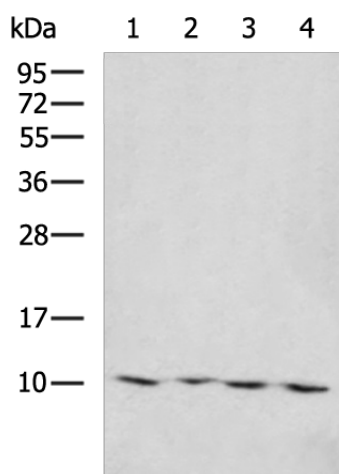
[View online »](#)

**Background:**

The human NDUFA1 gene codes for an essential component of complex I of the respiratory chain, which transfers electrons from NADH to ubiquinone. It has been noted that the N-terminal hydrophobic domain has the potential to be folded into an alpha-helix spanning the inner mitochondrial membrane with a C-terminal hydrophilic domain interacting with globular subunits of complex I. The highly conserved two-domain structure suggests that this feature is critical for the protein function and might act as an anchor for the NADH:ubiquinone oxidoreductase complex at the inner mitochondrial membrane. However, the NDUFA1 peptide is one of about 31 components of the hydrophobic protein (HP) fraction of complex I which is involved in proton translocation. Thus the NDUFA1 peptide may also participate in that function.

**Synonyms:**

CI-MWFE; MWFE; ZNF183

**Product images:**

Gel: 12%SDS-PAGE  
Lysate: 40 µg  
Lane 1-4: Mouse heart tissue  
Mouse brain tissue  
Rat liver tissue  
Mouse kidney tissue lysates  
Primary antibody: [TA373006] (NDUFA1 Antibody)  
at dilution 1/800  
Secondary antibody: Goat anti rabbit IgG at  
1/5000 dilution  
Exposure time: 40 seconds