

## Product datasheet for **TA373005S**

### GABPB2 Rabbit Polyclonal Antibody

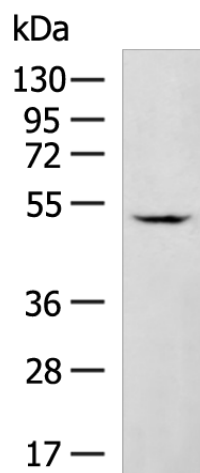
#### Product data:

Product Type:	Primary Antibodies
Applications:	WB
Recommended Dilution:	WB: 500-2000 WB positive control: Hela cell lysate
Reactivity:	Human, Mouse
Host:	Rabbit
Isotype:	IgG
Clonality:	Polyclonal
Immunogen:	Fusion protein of human GABPB2
Formulation:	pH7.4 PBS, 0.05% NaN <sub>3</sub> , 40% Glycerol
Concentration:	lot specific
Purification:	Antigen affinity purification
Conjugation:	Unconjugated
Storage:	Store at -20°C.
Stability:	1 year
Predicted Protein Size:	49 kDa
Gene Name:	GA binding protein transcription factor beta subunit 2
Database Link:	<a href="#">Entrez Gene 126626 Human Q8TAK5</a>
Background:	May function as transcription factor capable of interacting with purine rich repeats (GA repeats).
Synonyms:	GABPB-2; MGC29891



[View online »](#)

## Product images:



Gel: 8%SDS-PAGE  
Lysate: 40  $\mu$ g  
Lane: HeLa cell lysate  
Primary antibody: [TA373005] (GABPB2 Antibody)  
at dilution 1/1000  
Secondary antibody: Goat anti rabbit IgG at  
1/5000 dilution  
Exposure time: 1 minute