

## Product datasheet for **TA373003S**

### ETV7 Rabbit Polyclonal Antibody

#### Product data:

Product Type:	Primary Antibodies
Applications:	WB
Recommended Dilution:	WB: 1000-5000 WB positive control: MCF7, A431 cell lysates
Reactivity:	Human
Host:	Rabbit
Isotype:	IgG
Clonality:	Polyclonal
Immunogen:	Fusion protein of human ETV7
Formulation:	pH7.4 PBS, 0.05% NaN <sub>3</sub> , 40% Glycerol
Concentration:	lot specific
Purification:	Antigen affinity purification
Conjugation:	Unconjugated
Storage:	Store at -20°C.
Stability:	1 year
Predicted Protein Size:	39 kDa
Gene Name:	ETS variant 7
Database Link:	<a href="#">Entrez Gene 51513 Human Q9Y603</a>

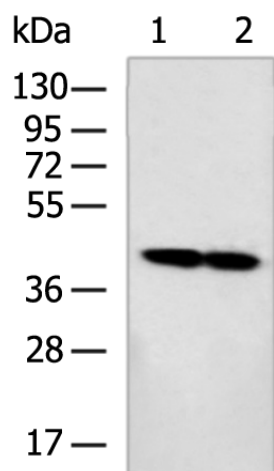
**Background:** The protein encoded by this gene belongs to the ETS family of transcription factors, which is a large group of evolutionarily conserved transcriptional regulators that play an important role in a variety of cellular processes throughout development and differentiation, and are involved in oncogenesis as well. This protein is predominantly expressed in hematopoietic tissues. Several alternatively spliced transcript variants encoding different isoforms have been described for this gene.

**Synonyms:** TEL-2; TEL2; TELB; TREF



[View online »](#)

## Product images:



Gel: 8%SDS-PAGE  
Lysate: 40  $\mu$ g  
Lane 1-2: MCF7  
A431 cell lysates  
Primary antibody: [TA373003] (ETV7 Antibody) at  
dilution 1/600  
Secondary antibody: Goat anti rabbit IgG at  
1/5000 dilution  
Exposure time: 90 seconds