

Product datasheet for **TA373002**

Epithelial Stromal Interaction 1 (EPSTI1) Rabbit Polyclonal Antibody

Product data:

Product Type:	Primary Antibodies
Applications:	IHC, WB
Recommended Dilution:	WB: 500-2000 WB positive control: HepG2 cell lysate IHC: 100-200 Positive control: Human breast cancer Predicted cell location: Cytoplasm
Reactivity:	Human
Host:	Rabbit
Isotype:	IgG
Clonality:	Polyclonal
Immunogen:	Fusion protein of human EPSTI1
Formulation:	pH7.4 PBS, 0.05% NaN ₃ , 40% Glycerol
Concentration:	lot specific
Purification:	Antigen affinity purification
Conjugation:	Unconjugated
Storage:	Store at -20°C.
Stability:	1 year
Predicted Protein Size:	37 kDa
Gene Name:	epithelial stromal interaction 1 (breast)
Database Link:	Entrez Gene 94240 Human Q96J88



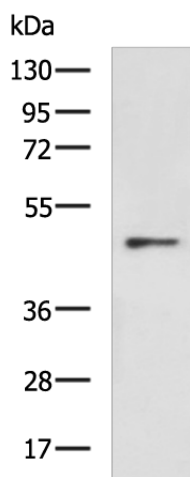
[View online »](#)

Background:

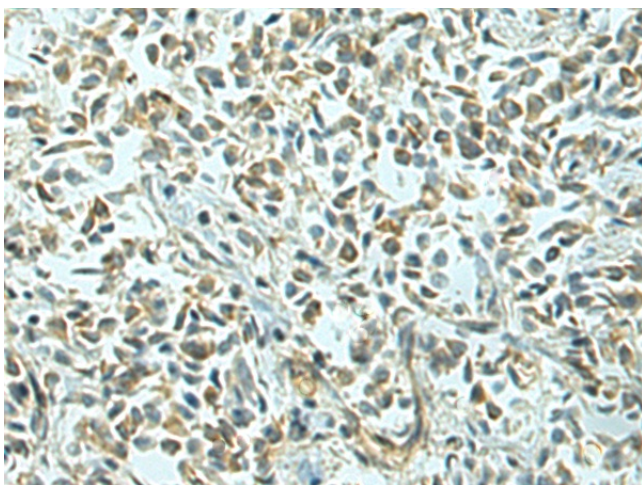
The protein encoded by this gene has been shown to promote tumor invasion and metastasis in some invasive cancer cells when overexpressed. Expression of this gene has been shown to be upregulated by direct binding of the Kruppel like factor 8 protein to promoter sequences. The translated protein interacts with the amino terminal region of the valosin containing protein gene product, resulting in the nuclear translocation of the nuclear factor kappa B subunit 1 gene product, and activation of target genes. Overexpression of this gene has been observed in some breast cancers and in some individuals with systemic lupus erythematosus (SLE).

Synonyms:

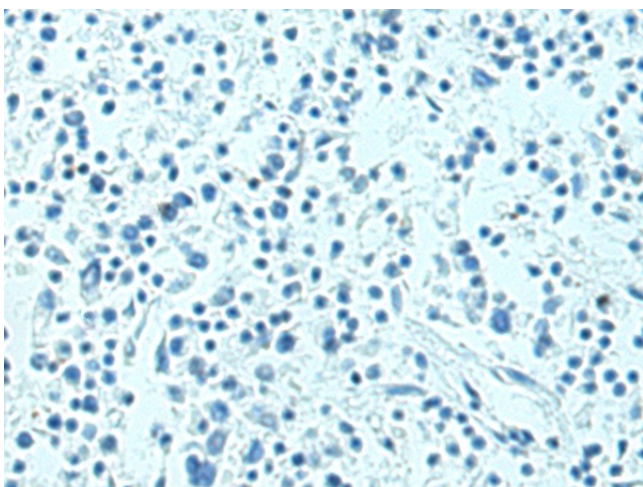
BRESI1; MGC29634

Product images:

Gel: 8%SDS-PAGE
Lysate: 40 µg
Lane: HepG2 cell lysate
Primary antibody: TA373002 (EPSTI1 Antibody) at dilution 1/1000
Secondary antibody: Goat anti rabbit IgG at 1/5000 dilution
Exposure time: 1 minute



Immunohistochemistry of paraffin-embedded Human breast cancer tissue using TA373002 (EPSTI1 Antibody) at dilution 1/160 (Original magnification: ×200)



Immunohistochemistry of paraffin-embedded Human breast cancer tissue using TA373002 (EPSTI1 Antibody) at dilution 1/160, treated with fusion protein. (Original magnification: ×200)