

Product datasheet for **TA372992**

AGBL3 Rabbit Polyclonal Antibody

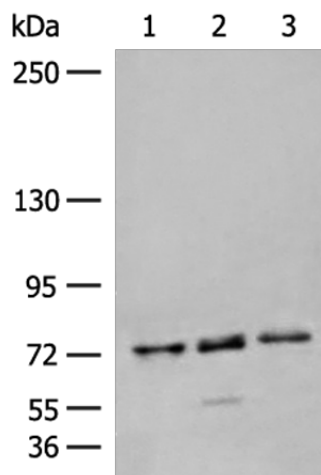
Product data:

Product Type:	Primary Antibodies
Applications:	WB
Recommended Dilution:	WB: 200-1000 WB positive control: Human fetal liver tissue, Mouse liver tissue, TM4 cell lysates
Reactivity:	Human, Mouse
Host:	Rabbit
Isotype:	IgG
Clonality:	Polyclonal
Immunogen:	Fusion protein of human AGBL3
Formulation:	pH7.4 PBS, 0.05% NaN ₃ , 40% Glycerol
Concentration:	lot specific
Purification:	Antigen affinity purification
Conjugation:	Unconjugated
Storage:	Store at -20°C.
Stability:	1 year
Predicted Protein Size:	116 kDa
Gene Name:	ATP/GTP binding protein-like 3
Database Link:	Entrez Gene 340351 Human Q8NEM8
Background:	Metalloprotease that mediates both deglutamylation and deaspartylation of target proteins. Catalyzes the deglutamylation of polyglutamate side chains generated by post-translational polyglutamylation in proteins such as tubulins. Also removes gene-encoded polyglutamates or polyaspartates from the carboxy-terminus of target proteins such as MYLK. Does not show dephosphorylation or deglycosylase activities from the carboxy-terminus of tubulin.
Synonyms:	CCP3; FLJ12983; MGC32955



[View online »](#)

Product images:



Gel: 6%SDS-PAGE

Lysate: 40 μ g

Lane 1-3: Human fetal liver tissue

Mouse liver tissue

TM4 cell lysates

Primary antibody: TA372992 (AGBL3 Antibody) at dilution 1/250

Secondary antibody: Goat anti rabbit IgG at 1/5000 dilution

Exposure time: 1 minute