

## Product datasheet for **TA372991**

### **AADACL1 (NCEH1) Rabbit Polyclonal Antibody**

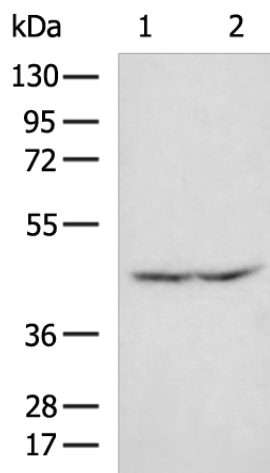
#### **Product data:**

|                         |  |
|-------------------------|--|
| Product Type:           | Primary Antibodies   |
| Applications:           | WB   |
| Recommended Dilution:   | WB: 1000-5000<br>WB positive control: Mouse kidney tissue, Mouse brain tissue lysates  |
| Reactivity:             | Human, Mouse, Rat  |
| Host:                   | Rabbit   |
| Isotype:                | IgG  |
| Clonality:              | Polyclonal   |
| Immunogen:              | Fusion protein of human NCEH1  |
| Formulation:            | pH7.4 PBS, 0.05% NaN <sub>3</sub> , 40% Glycerol   |
| Concentration:          | lot specific   |
| Purification:           | Antigen affinity purification  |
| Conjugation:            | Unconjugated   |
| Storage:                | Store at -20°C.  |
| Stability:              | 1 year   |
| Predicted Protein Size: | 46 kDa   |
| Gene Name:              | neutral cholesterol ester hydrolase 1  |
| Database Link:          | <a href="#">Entrez Gene 57552 Human Q6PIU2</a>   |
| Background:             | Hydrolyzes 2-acetyl monoalkylglycerol ether, the penultimate precursor of the pathway for de novo synthesis of platelet-activating factor. May be responsible for cholesterol ester hydrolysis in macrophages. |
| Synonyms:               | AADACL1; NCEH  |



[View online »](#)

## Product images:



Gel: 8%SDS-PAGE

Lysate: 40  $\mu$ g

Lane 1-2: Mouse kidney tissue

Mouse brain tissue lysates

Primary antibody: TA372991 (NCEH1 Antibody) at dilution 1/1000

Secondary antibody: Goat anti rabbit IgG at 1/5000 dilution

Exposure time: 1 second