

Product datasheet for **TA372986**

SPATA2L Rabbit Polyclonal Antibody

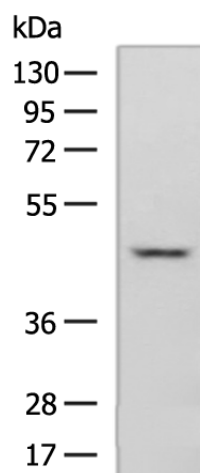
Product data:

Product Type:	Primary Antibodies
Applications:	WB
Recommended Dilution:	WB: 500-2000 WB positive control: A549 cell lysate
Reactivity:	Human
Host:	Rabbit
Isotype:	IgG
Clonality:	Polyclonal
Immunogen:	Fusion protein of human SPATA2L
Formulation:	pH7.4 PBS, 0.05% NaN ₃ , 40% Glycerol
Concentration:	lot specific
Purification:	Antigen affinity purification
Conjugation:	Unconjugated
Storage:	Store at -20°C.
Stability:	1 year
Predicted Protein Size:	46 kDa
Gene Name:	spermatogenesis associated 2 like
Database Link:	Entrez Gene 124044 Human Q8IUW3
Background:	SPATA2L belongs to the SPATA2 family. The exact function of SPATA2L is not known.
Synonyms:	C16orf76; MGC26885; tamu



[View online »](#)

Product images:



Gel: 8%SDS-PAGE
 Lysate: 40 µg
 Lane: A549 cell lysate
 Primary antibody: TA372986 (SPATA2L Antibody)
 at dilution 1/1000
 Secondary antibody: Goat anti rabbit IgG at
 1/5000 dilution
 Exposure time: 3 minutes