

## Product datasheet for **TA372970**

### COX6B2 Rabbit Polyclonal Antibody

#### Product data:

Product Type:	Primary Antibodies
Applications:	WB
Recommended Dilution:	WB: 500-2000 WB positive control: Mouse testis tissue lysate
Reactivity:	Human, Mouse
Host:	Rabbit
Isotype:	IgG
Clonality:	Polyclonal
Immunogen:	Fusion protein of human COX6B2
Formulation:	pH7.4 PBS, 0.05% NaN <sub>3</sub> , 40% Glycerol
Concentration:	lot specific
Purification:	Antigen affinity purification
Conjugation:	Unconjugated
Storage:	Store at -20°C.
Stability:	1 year
Predicted Protein Size:	11 kDa
Gene Name:	cytochrome c oxidase subunit 6B2
Database Link:	<a href="#">Entrez Gene 125965 Human Q6YFQ2</a>

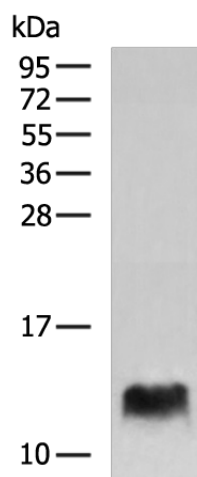
**Background:** The cytochrome c oxidase (COX) family of proteins function as the final electron donor in the respiratory chain to drive a proton gradient across the inner mitochondrial membrane, ultimately resulting in the production of water. The mammalian COX apoenzyme is a dimer, with each monomer consisting of 13 subunits, some of which are mitochondrial and some of which are nuclear. Localized to the intermembrane space, COX6b2 (Cytochrome c oxidase subunit 6B2), also known as Cytochrome c oxidase subunit VIb isoform 2 and Cancer/testis antigen 59, is a 88 amino acid mitochondrial protein that is responsible for joining the two COX monomers to form the COX dimer. COX6b2 is specifically expressed in testis and is found to be upregulated in certain cancer cell lines.



[View online »](#)

Synonyms: COXVIB2; CT59; FLJ32865; MGC119094

### Product images:



Gel: 12%SDS-PAGE  
Lysate: 40  $\mu$ g  
Lane: Mouse testis tissue lysate  
Primary antibody: TA372970 (COX6B2 Antibody)  
at dilution 1/800  
Secondary antibody: Goat anti rabbit IgG at  
1/5000 dilution  
Exposure time: 5 minutes