

Product datasheet for **TA372958S**

Kallikrein 15 (KLK15) Rabbit Polyclonal Antibody

Product data:

Product Type:	Primary Antibodies
Applications:	IHC, WB
Recommended Dilution:	WB: 500-2000 WB positive control: Mouse liver tissue, Jurkat cell, Mouse kidney tissue lysates IHC: 50-100 Positive control: Human prostate cancer Predicted cell location: Secreted
Reactivity:	Human, Mouse
Host:	Rabbit
Isotype:	IgG
Clonality:	Polyclonal
Immunogen:	Synthetic peptide of human KLK15
Formulation:	pH7.4 PBS, 0.05% NaN ₃ , 40% Glycerol
Concentration:	lot specific
Purification:	Antigen affinity purification
Conjugation:	Unconjugated
Storage:	Store at -20°C.
Stability:	1 year
Predicted Protein Size:	28 kDa
Gene Name:	kallikrein related peptidase 15
Database Link:	Entrez Gene 55554 Human Q9H2R5



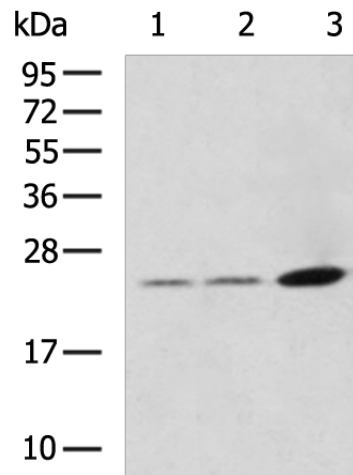
[View online »](#)

Background:

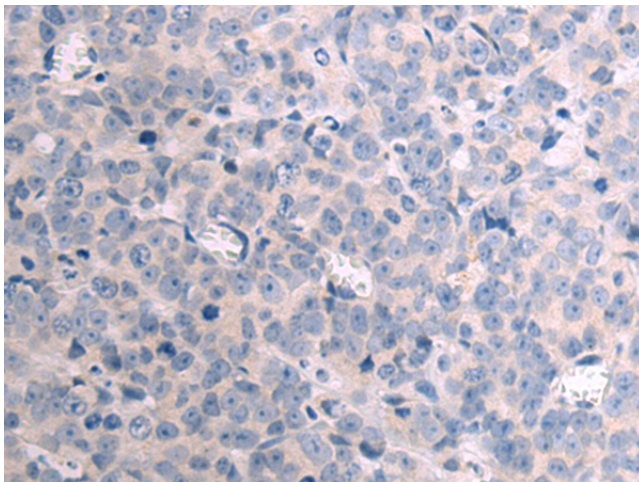
Kallikreins are a subgroup of serine proteases having diverse physiological functions. Growing evidence suggests that many kallikreins are implicated in carcinogenesis and some have potential as novel cancer and other disease biomarkers. This gene is one of the fifteen kallikrein subfamily members located in a cluster on chromosome 19. In prostate cancer, this gene has increased expression, which indicates its possible use as a diagnostic or prognostic marker for prostate cancer. The gene contains multiple polyadenylation sites and alternative splicing results in multiple transcript variants encoding distinct isoforms.

Synonyms:

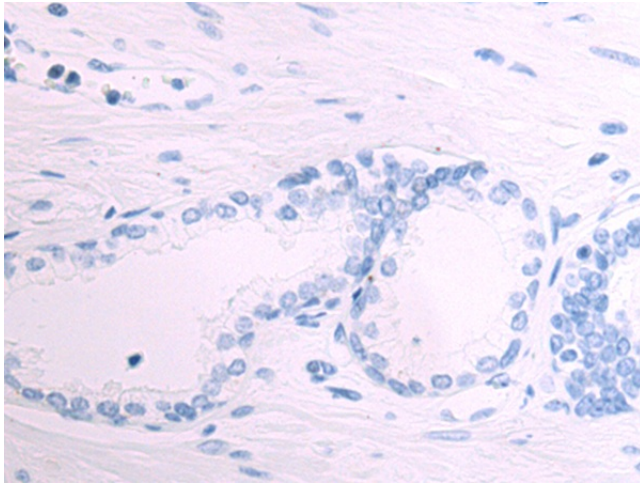
ACO; HSRNASPH; prostinogen

Product images:


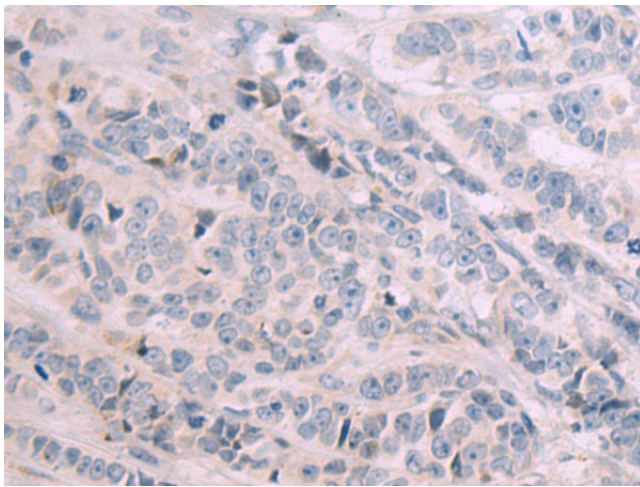
Gel: 12%SDS-PAGE
 Lysate: 40 µg
 Lane 1-3: Mouse liver tissue
 Jurkat cell
 Mouse kidney tissue lysates
 Primary antibody: [TA372958] (KLK15 Antibody)
 at dilution 1/500
 Secondary antibody: Goat anti rabbit IgG at
 1/5000 dilution
 Exposure time: 1 minute



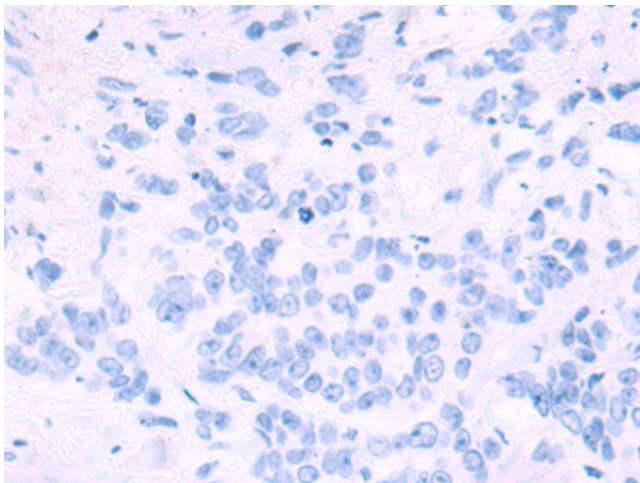
Immunohistochemistry of paraffin-embedded
 Human prostate cancer tissue using [TA372958]
 (KLK15 Antibody) at dilution 1/50 (Original
 magnification: ×200)



Immunohistochemistry of paraffin-embedded Human prostate cancer tissue using [TA372958] (KLK15 Antibody) at dilution 1/50, treated with synthetic peptide. (Original magnification: $\times 200$)



Immunohistochemistry of paraffin-embedded Human breast cancer tissue using [TA372958] (KLK15 Antibody) at dilution 1/50 (Original magnification: $\times 200$)



Immunohistochemistry of paraffin-embedded Human breast cancer tissue using [TA372958] (KLK15 Antibody) at dilution 1/50, treated with synthetic peptide. (Original magnification: $\times 200$)