

## Product datasheet for **TA372958**

### Kallikrein 15 (KLK15) Rabbit Polyclonal Antibody

#### Product data:

Product Type:	Primary Antibodies
Applications:	IHC, WB
Recommended Dilution:	WB: 500-2000 WB positive control: Mouse liver tissue, Jurkat cell, Mouse kidney tissue lysates IHC: 50-100 Positive control: Human prostate cancer Predicted cell location: Secreted
Reactivity:	Human, Mouse
Host:	Rabbit
Isotype:	IgG
Clonality:	Polyclonal
Immunogen:	Synthetic peptide of human KLK15
Formulation:	pH7.4 PBS, 0.05% NaN <sub>3</sub> , 40% Glycerol
Concentration:	lot specific
Purification:	Antigen affinity purification
Conjugation:	Unconjugated
Storage:	Store at -20°C.
Stability:	1 year
Predicted Protein Size:	28 kDa
Gene Name:	kallikrein related peptidase 15
Database Link:	<a href="#">Entrez Gene 55554 Human Q9H2R5</a>



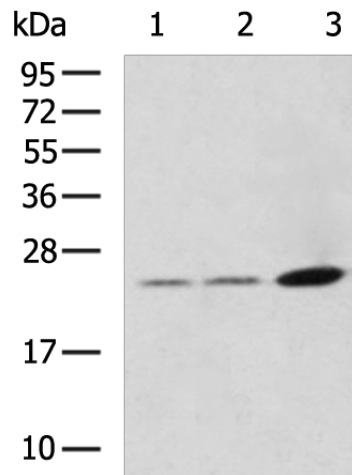
[View online »](#)

**Background:**

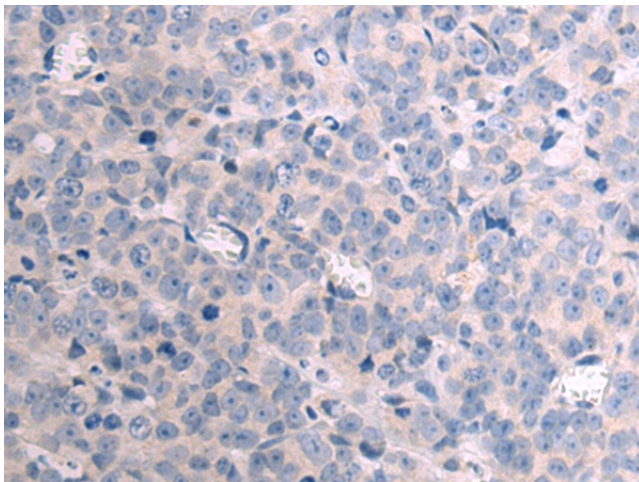
Kallikreins are a subgroup of serine proteases having diverse physiological functions. Growing evidence suggests that many kallikreins are implicated in carcinogenesis and some have potential as novel cancer and other disease biomarkers. This gene is one of the fifteen kallikrein subfamily members located in a cluster on chromosome 19. In prostate cancer, this gene has increased expression, which indicates its possible use as a diagnostic or prognostic marker for prostate cancer. The gene contains multiple polyadenylation sites and alternative splicing results in multiple transcript variants encoding distinct isoforms.

**Synonyms:**

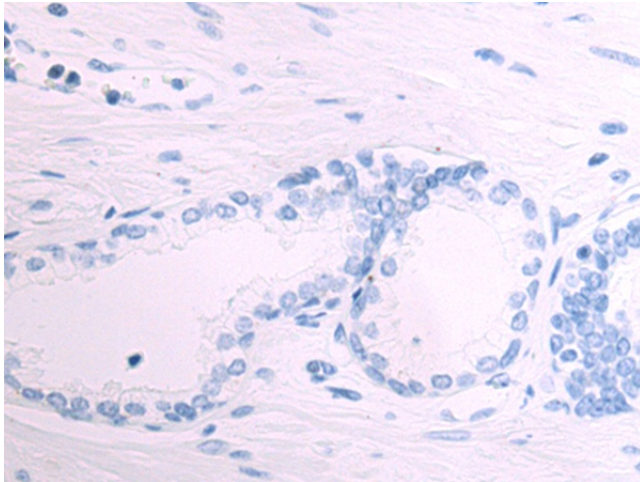
ACO; HSRNASPH; prostinogen

**Product images:**


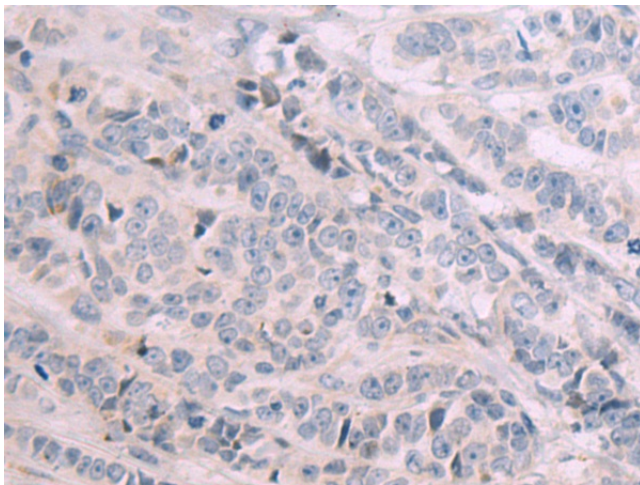
Gel: 12%SDS-PAGE  
 Lysate: 40 µg  
 Lane 1-3: Mouse liver tissue  
 Jurkat cell  
 Mouse kidney tissue lysates  
 Primary antibody: TA372958 (KLK15 Antibody) at dilution 1/500  
 Secondary antibody: Goat anti rabbit IgG at 1/5000 dilution  
 Exposure time: 1 minute



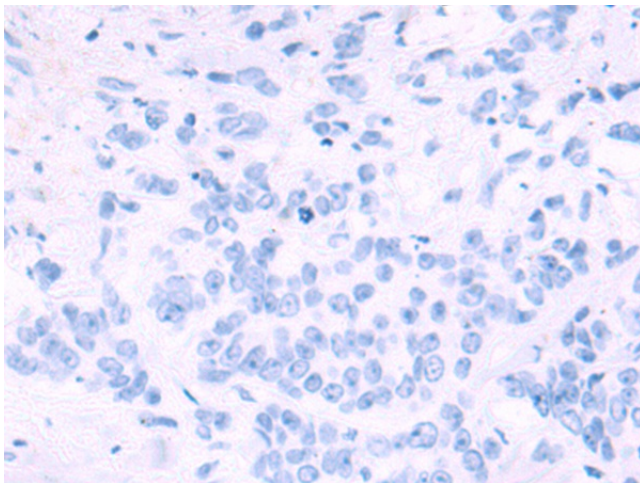
Immunohistochemistry of paraffin-embedded Human prostate cancer tissue using TA372958 (KLK15 Antibody) at dilution 1/50 (Original magnification: ×200)



Immunohistochemistry of paraffin-embedded Human prostate cancer tissue using TA372958 (KLK15 Antibody) at dilution 1/50, treated with synthetic peptide. (Original magnification: ×200)



Immunohistochemistry of paraffin-embedded Human breast cancer tissue using TA372958 (KLK15 Antibody) at dilution 1/50 (Original magnification: ×200)



Immunohistochemistry of paraffin-embedded Human breast cancer tissue using TA372958 (KLK15 Antibody) at dilution 1/50, treated with synthetic peptide. (Original magnification: ×200)