

Product datasheet for **TA372943S**

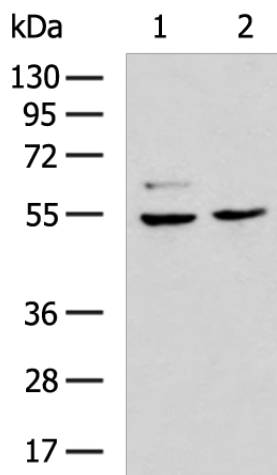
GABA A Receptor alpha 3 (GABRA3) Rabbit Polyclonal Antibody

Product data:

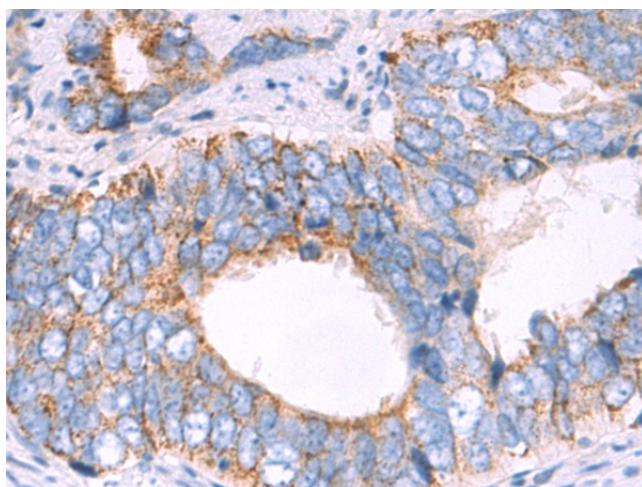
Product Type:	Primary Antibodies
Applications:	IHC, WB
Recommended Dilution:	WB: 500-2000 WB positive control: A172 and HepG2 cell lysates IHC: 50-200 Positive control: Human prostate cancer Predicted cell location: Cytoplasm and Cell membrane
Reactivity:	Human, Mouse, Rat
Host:	Rabbit
Isotype:	IgG
Clonality:	Polyclonal
Immunogen:	Synthetic peptide of human GABRA3
Formulation:	pH7.4 PBS, 0.05% NaN ₃ , 40% Glycerol
Concentration:	lot specific
Purification:	Antigen affinity purification
Conjugation:	Unconjugated
Storage:	Store at -20°C.
Stability:	1 year
Predicted Protein Size:	55 kDa
Gene Name:	gamma-aminobutyric acid type A receptor alpha3 subunit
Database Link:	Entrez Gene 2556 Human P34903
Background:	GABA is the major inhibitory neurotransmitter in the mammalian brain where it acts at GABA-A receptors, which are ligand-gated chloride channels. Chloride conductance of these channels can be modulated by agents such as benzodiazepines that bind to the GABA-A receptor. At least 16 distinct subunits of GABA-A receptors have been identified.
Synonyms:	MGC33793; OTTHUMP00000025898



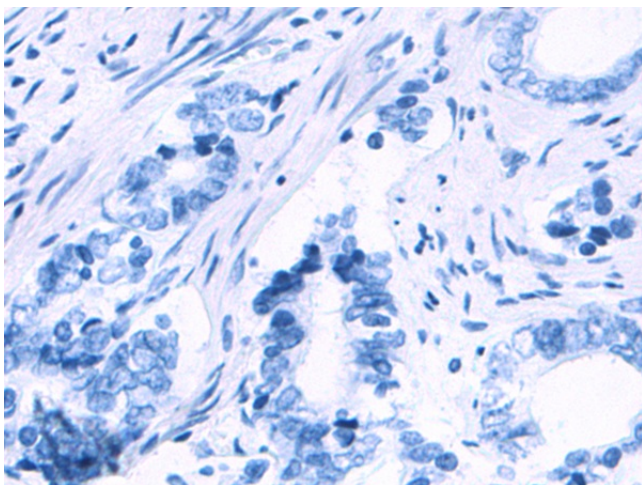
[View online »](#)

Product images:


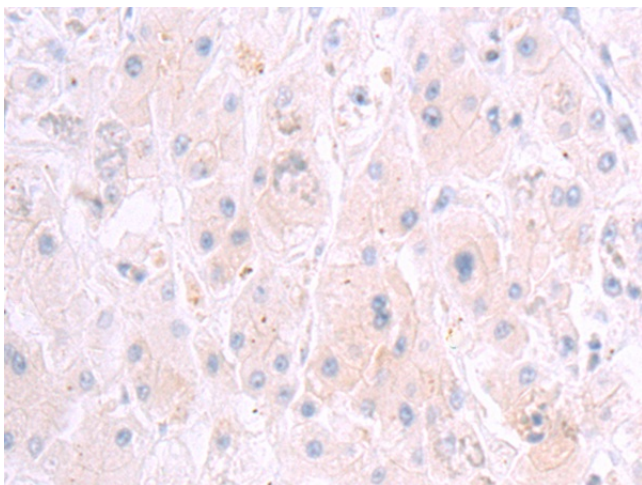
Gel: 8%SDS-PAGE
 Lysate: 40 µg
 Lane 1-2: A172 and HepG2 cell lysates
 Primary antibody: [TA372943] (GABRA3 Antibody) at dilution 1/250
 Secondary antibody: Goat anti rabbit IgG at 1/5000 dilution
 Exposure time: 40 seconds



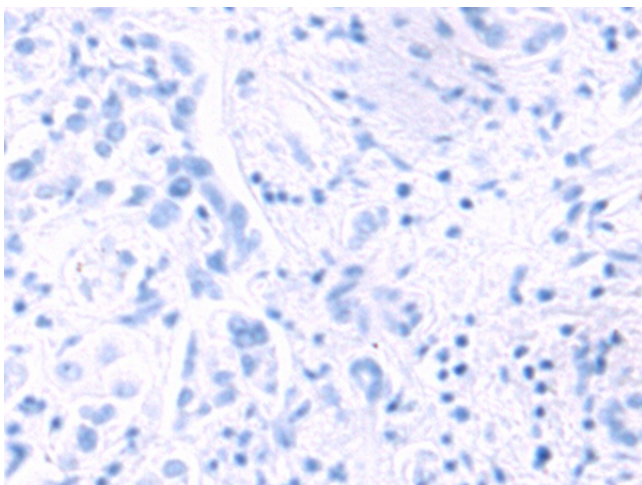
Immunohistochemistry of paraffin-embedded Human prostate cancer tissue using [TA372943] (GABRA3 Antibody) at dilution 1/50 (Original magnification: ×200)



Immunohistochemistry of paraffin-embedded Human prostate cancer tissue using [TA372943] (GABRA3 Antibody) at dilution 1/50, treated with synthetic peptide. (Original magnification: ×200)



Immunohistochemistry of paraffin-embedded Human liver cancer tissue using [TA372943] (GABRA3 Antibody) at dilution 1/50 (Original magnification: ×200)



Immunohistochemistry of paraffin-embedded Human liver cancer tissue using [TA372943] (GABRA3 Antibody) at dilution 1/50, treated with synthetic peptide. (Original magnification: ×200)