

## Product datasheet for **TA372941S**

### **CAMK2B Rabbit Polyclonal Antibody**

#### **Product data:**

Product Type:	Primary Antibodies
Applications:	IHC, WB
Recommended Dilution:	WB: 200-1000 WB positive control: LOVO cell lysate IHC: 50-100 Positive control: Human liver cancer Predicted cell location: Cytoplasm
Reactivity:	Human
Host:	Rabbit
Isotype:	IgG
Clonality:	Polyclonal
Immunogen:	Synthetic peptide of human CAMK2B
Formulation:	pH7.4 PBS, 0.05% NaN <sub>3</sub> , 40% Glycerol
Concentration:	lot specific
Purification:	Antigen affinity purification
Conjugation:	Unconjugated
Storage:	Store at -20°C.
Stability:	1 year
Predicted Protein Size:	73 kDa
Gene Name:	calcium/calmodulin dependent protein kinase II beta
Database Link:	<a href="#">Entrez Gene 816 Human Q13554</a>



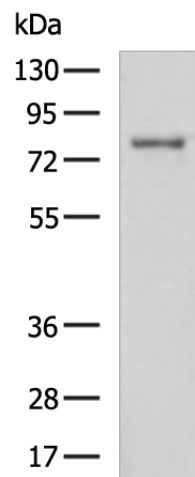
[View online »](#)

**Background:**

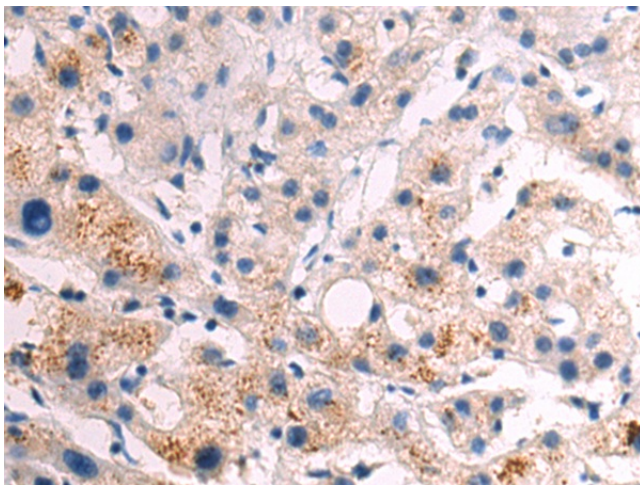
The product of this gene belongs to the serine/threonine protein kinase family and to the Ca(2+)/calmodulin-dependent protein kinase subfamily. Calcium signaling is crucial for several aspects of plasticity at glutamatergic synapses. In mammalian cells, the enzyme is composed of four different chains: alpha, beta, gamma, and delta. The product of this gene is a beta chain. It is possible that distinct isoforms of this chain have different cellular localizations and interact differently with calmodulin. Alternative splicing results in multiple transcript variants.

**Synonyms:**

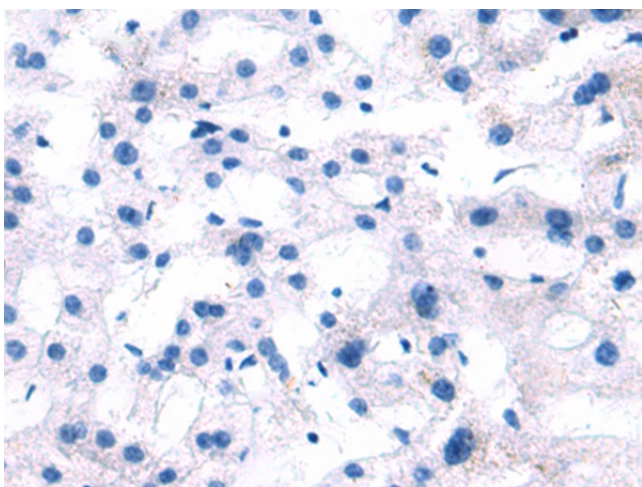
CAM2; CAMK2; CAMKB; MGC29528; OTTHUMP00000159355; OTTHUMP00000159356; OTTHUMP00000209343

**Product images:**

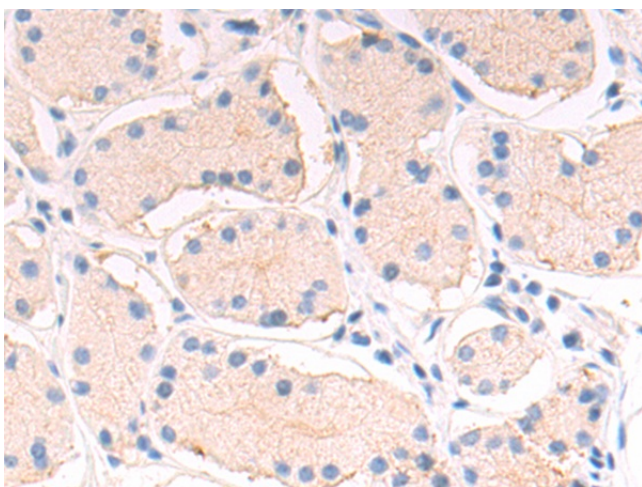
Gel: 8%SDS-PAGE  
Lysate: 40 µg  
Lane: LOVO cell lysate  
Primary antibody: [TA372941] (CAMK2B Antibody) at dilution 1/250  
Secondary antibody: Goat anti rabbit IgG at 1/5000 dilution  
Exposure time: 90 seconds



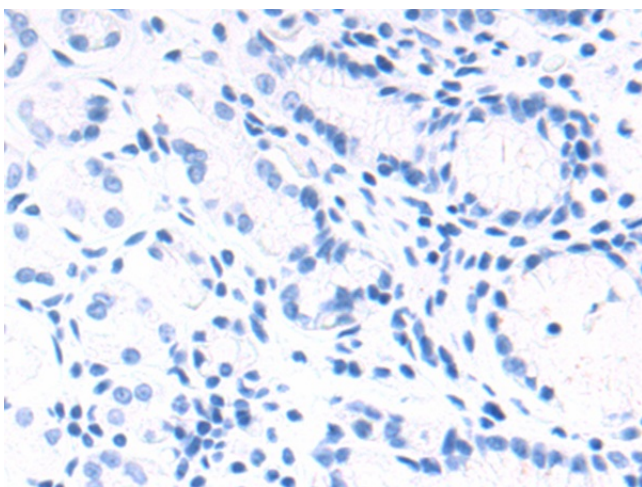
Immunohistochemistry of paraffin-embedded Human liver cancer tissue using [TA372941] (CAMK2B Antibody) at dilution 1/50 (Original magnification: ×200)



Immunohistochemistry of paraffin-embedded Human liver cancer tissue using [TA372941] (CAMK2B Antibody) at dilution 1/50, treated with synthetic peptide. (Original magnification: ×200)



Immunohistochemistry of paraffin-embedded Human esophagus cancer tissue using [TA372941] (CAMK2B Antibody) at dilution 1/50 (Original magnification: ×200)



Immunohistochemistry of paraffin-embedded Human esophagus cancer tissue using [TA372941] (CAMK2B Antibody) at dilution 1/50, treated with synthetic peptide. (Original magnification: ×200)