

## Product datasheet for **TA372931S**

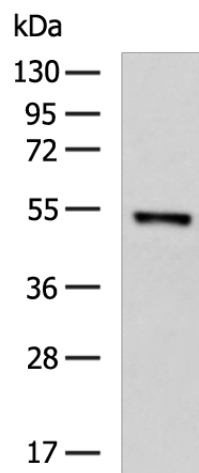
### STEAP3 Rabbit Polyclonal Antibody

#### Product data:

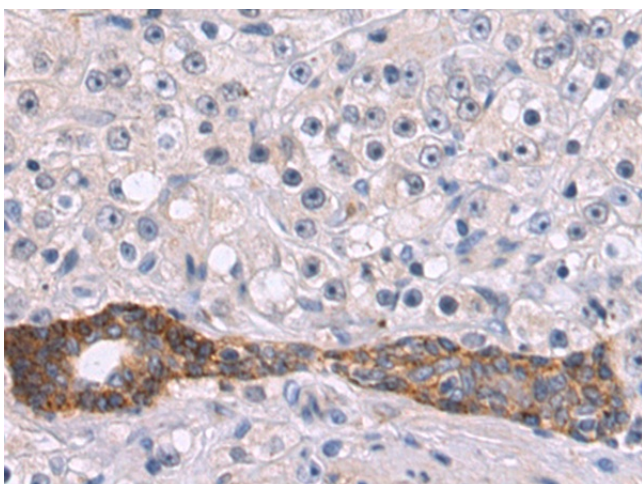
Product Type:	Primary Antibodies
Applications:	IHC, WB
Recommended Dilution:	WB: 500-2000 WB positive control: A172 cell lysate IHC: 50-100 Positive control: Human prostate cancer Predicted cell location: Cytoplasm and Cell membrane
Reactivity:	Human, Mouse, Rat
Host:	Rabbit
Isotype:	IgG
Clonality:	Polyclonal
Immunogen:	Synthetic peptide of human STEAP3
Formulation:	pH7.4 PBS, 0.05% NaN <sub>3</sub> , 40% Glycerol
Concentration:	lot specific
Purification:	Antigen affinity purification
Conjugation:	Unconjugated
Storage:	Store at -20°C.
Stability:	1 year
Predicted Protein Size:	55 kDa
Gene Name:	STEAP3 metalloreductase
Database Link:	<a href="#">Entrez Gene 55240 Human Q658P3</a>
Background:	This gene encodes a multipass membrane protein that functions as an iron transporter. The encoded protein can reduce both iron (Fe <sup>3+</sup> ) and copper (Cu <sup>2+</sup> ) cations. This protein may mediate downstream responses to p53, including promoting apoptosis. Deficiency in this gene can cause anemia. Alternative splicing results in multiple transcript variants.
Synonyms:	1010001D01Rik; dudlin-2; Dudulin-2; hpHyde; hTSAP6; OTTHUMP00000162093; pHyde; STMP3; TSAP6



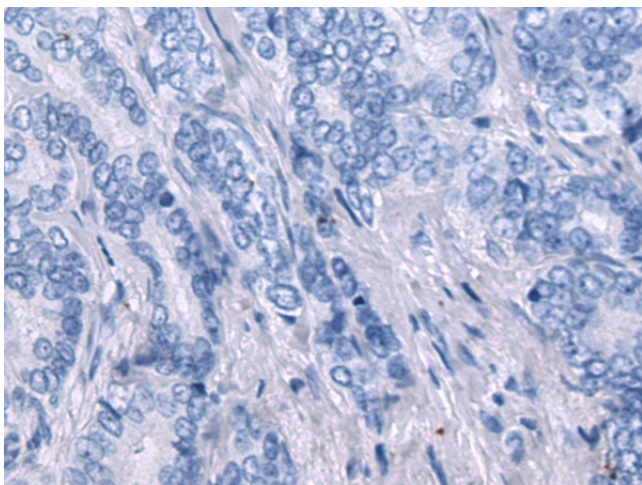
[View online »](#)

**Product images:**

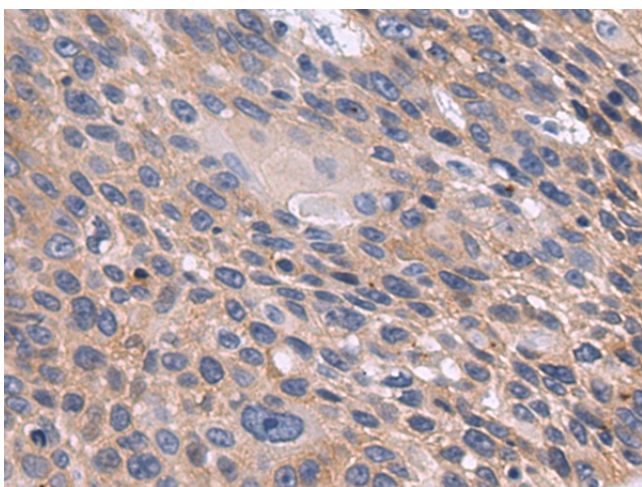
Gel: 8%SDS-PAGE  
Lysate: 40  $\mu$ g  
Lane: A172 cell lysate  
Primary antibody: [TA372931] (STEAP3 Antibody) at dilution 1/400  
Secondary antibody: Goat anti rabbit IgG at 1/5000 dilution  
Exposure time: 30 seconds



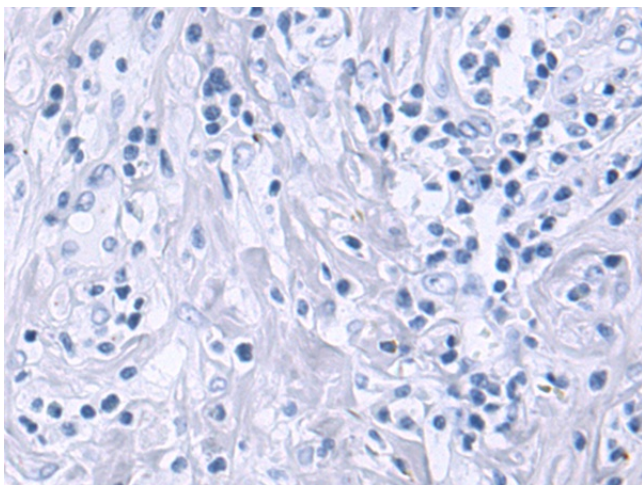
Immunohistochemistry of paraffin-embedded Human prostate cancer tissue using [TA372931] (STEAP3 Antibody) at dilution 1/50 (Original magnification:  $\times$ 200)



Immunohistochemistry of paraffin-embedded Human prostate cancer tissue using [TA372931] (STEAP3 Antibody) at dilution 1/50, treated with synthetic peptide. (Original magnification: ×200)



Immunohistochemistry of paraffin-embedded Human esophagus cancer tissue using [TA372931] (STEAP3 Antibody) at dilution 1/50 (Original magnification: ×200)



Immunohistochemistry of paraffin-embedded Human esophagus cancer tissue using [TA372931] (STEAP3 Antibody) at dilution 1/50, treated with synthetic peptide. (Original magnification: ×200)