

## Product datasheet for **TA372921S**

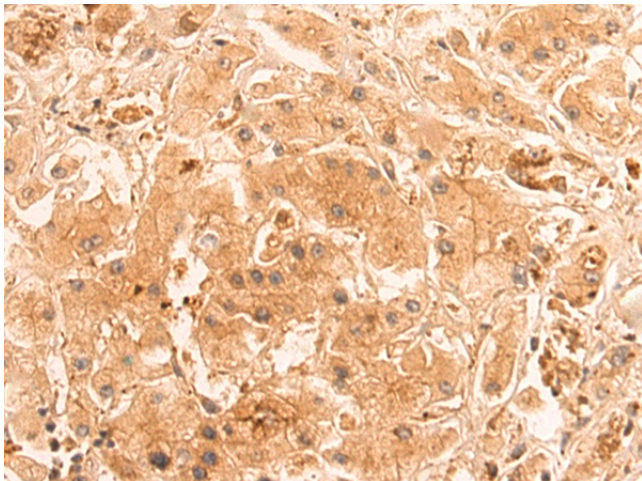
### PNCK Rabbit Polyclonal Antibody

#### Product data:

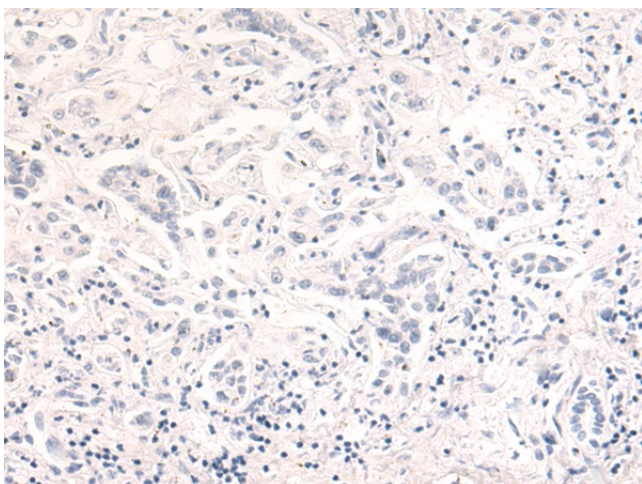
Product Type:	Primary Antibodies
Applications:	IHC
Recommended Dilution:	IHC: 100-300 Positive control: Human liver cancer Predicted cell location: Cytoplasm and Nucleus
Reactivity:	Human, Mouse, Rat
Host:	Rabbit
Isotype:	IgG
Clonality:	Polyclonal
Immunogen:	Synthetic peptide of human PNCK
Formulation:	pH7.4 PBS, 0.05% NaN <sub>3</sub> , 40% Glycerol
Concentration:	lot specific
Purification:	Antigen affinity purification
Conjugation:	Unconjugated
Storage:	Store at -20°C.
Stability:	1 year
Gene Name:	pregnancy up-regulated nonubiquitous CaM kinase
Database Link:	<a href="#">Entrez Gene 139728 Human Q6P2M8</a>
Background:	PNCK is a member of the calcium/calmodulin-dependent protein kinase family of protein serine/threonine kinases.
Synonyms:	BSTK3; CaMK1b; CaMKI-beta; FLJ50403; FLJ50549; FLJ56451; FLJ59811; MGC45419



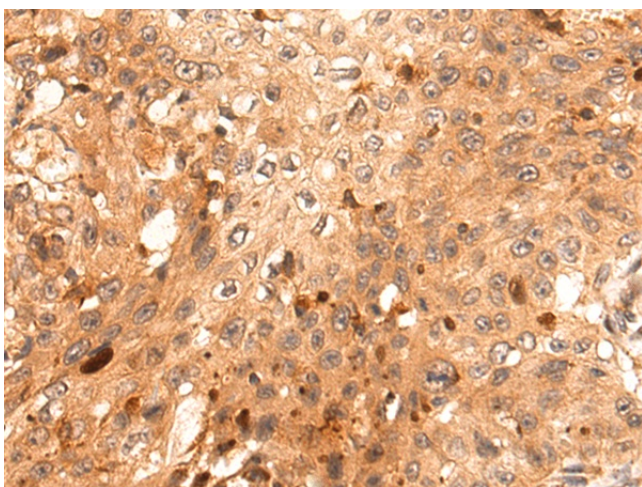
[View online »](#)

**Product images:**

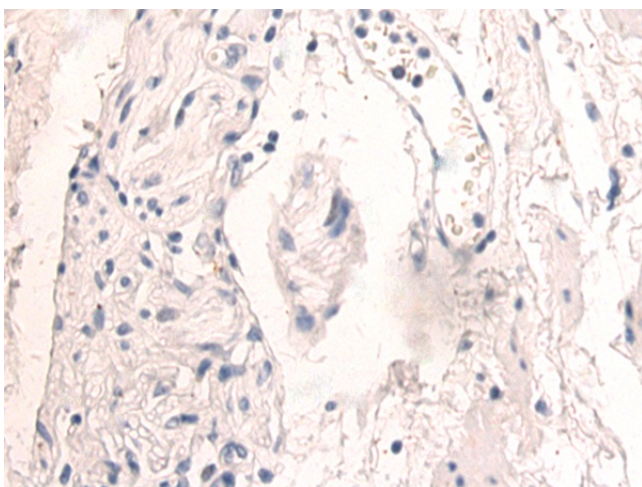
Immunohistochemistry of paraffin-embedded Human liver cancer tissue using [TA372921] (PNCK Antibody) at dilution 1/75 (Original magnification:  $\times 200$ )



Immunohistochemistry of paraffin-embedded Human liver cancer tissue using [TA372921] (PNCK Antibody) at dilution 1/75, treated with synthetic peptide. (Original magnification:  $\times 200$ )



Immunohistochemistry of paraffin-embedded Human esophagus cancer tissue using [TA372921] (PNCK Antibody) at dilution 1/75 (Original magnification:  $\times 200$ )



Immunohistochemistry of paraffin-embedded Human esophagus cancer tissue using [TA372921] (PNCK Antibody) at dilution 1/75, treated with synthetic peptide. (Original magnification:  $\times 200$ )