

Product datasheet for **TA372921**

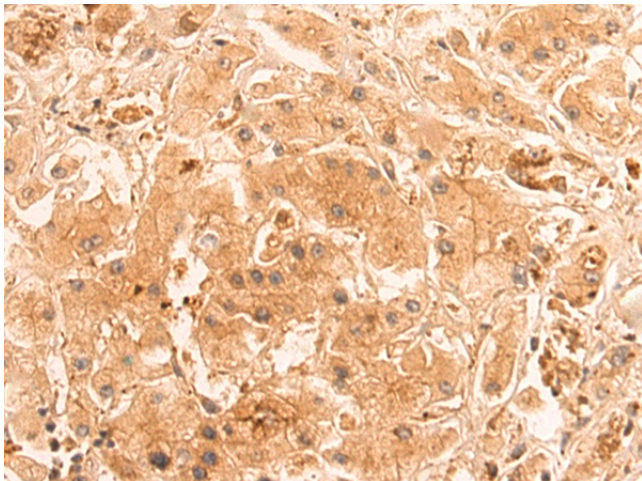
PNCK Rabbit Polyclonal Antibody

Product data:

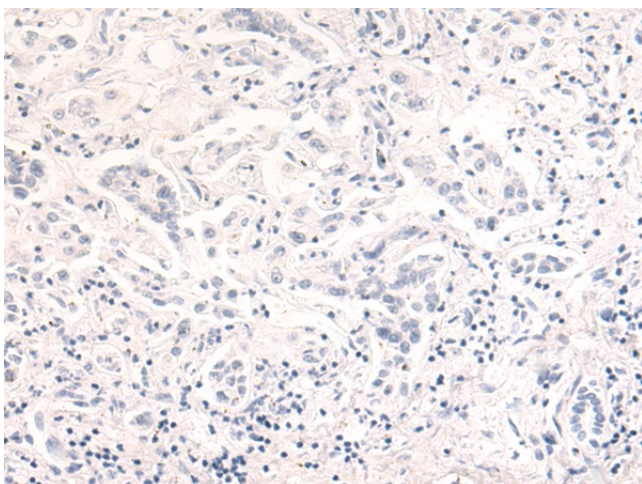
Product Type:	Primary Antibodies
Applications:	IHC
Recommended Dilution:	IHC: 100-300 Positive control: Human liver cancer Predicted cell location: Cytoplasm and Nucleus
Reactivity:	Human, Mouse, Rat
Host:	Rabbit
Isotype:	IgG
Clonality:	Polyclonal
Immunogen:	Synthetic peptide of human PNCK
Formulation:	pH7.4 PBS, 0.05% NaN ₃ , 40% Glycerol
Concentration:	lot specific
Purification:	Antigen affinity purification
Conjugation:	Unconjugated
Storage:	Store at -20°C.
Stability:	1 year
Gene Name:	pregnancy up-regulated nonubiquitous CaM kinase
Database Link:	Entrez Gene 139728 Human Q6P2M8
Background:	PNCK is a member of the calcium/calmodulin-dependent protein kinase family of protein serine/threonine kinases.
Synonyms:	BSTK3; CaMK1b; CaMKI-beta; FLJ50403; FLJ50549; FLJ56451; FLJ59811; MGC45419



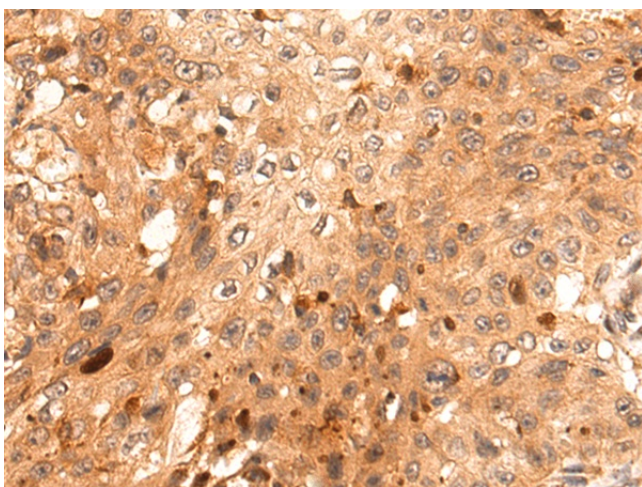
[View online »](#)

Product images:

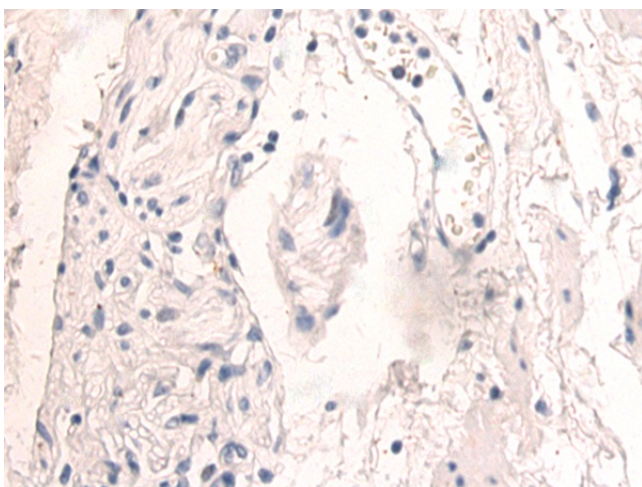
Immunohistochemistry of paraffin-embedded Human liver cancer tissue using TA372921 (PNCK Antibody) at dilution 1/75 (Original magnification: ×200)



Immunohistochemistry of paraffin-embedded Human liver cancer tissue using TA372921 (PNCK Antibody) at dilution 1/75, treated with synthetic peptide. (Original magnification: ×200)



Immunohistochemistry of paraffin-embedded Human esophagus cancer tissue using TA372921 (PNCK Antibody) at dilution 1/75 (Original magnification: $\times 200$)



Immunohistochemistry of paraffin-embedded Human esophagus cancer tissue using TA372921 (PNCK Antibody) at dilution 1/75, treated with synthetic peptide. (Original magnification: $\times 200$)