

## Product datasheet for **TA372916S**

### NRAS Rabbit Polyclonal Antibody

#### Product data:

Product Type:	Primary Antibodies
Applications:	IHC, WB
Recommended Dilution:	WB: 200-1000 WB positive control: Human cerebella tissue, Mouse brain tissue lysates IHC: 50-100 Positive control: Human breast cancer Predicted cell location: Cytoplasm and Cell membrane
Reactivity:	Human, Mouse, Rat
Host:	Rabbit
Isotype:	IgG
Clonality:	Polyclonal
Immunogen:	Synthetic peptide of human NRAS
Formulation:	pH7.4 PBS, 0.05% NaN <sub>3</sub> , 40% Glycerol
Concentration:	lot specific
Purification:	Antigen affinity purification
Conjugation:	Unconjugated
Storage:	Store at -20°C.
Stability:	1 year
Predicted Protein Size:	21 kDa
Gene Name:	neuroblastoma RAS viral oncogene homolog
Database Link:	<a href="#">Entrez Gene 4893 Human P01111</a>



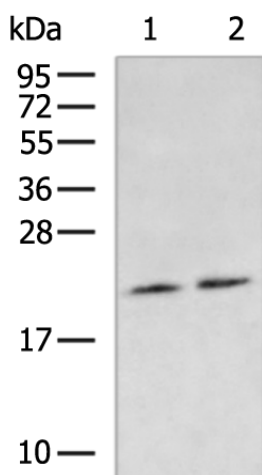
[View online »](#)

**Background:**

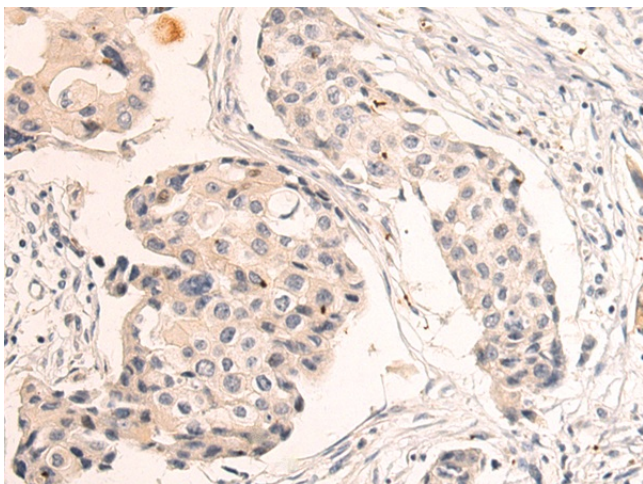
This is an N-ras oncogene encoding a membrane protein that shuttles between the Golgi apparatus and the plasma membrane. This shuttling is regulated through palmitoylation and depalmitoylation by the ZDHHC9-GOLGA7 complex. The encoded protein, which has intrinsic GTPase activity, is activated by a guanine nucleotide-exchange factor and inactivated by a GTPase activating protein. Mutations in this gene have been associated with somatic rectal cancer, follicular thyroid cancer, autoimmune lymphoproliferative syndrome, Noonan syndrome, and juvenile myelomonocytic leukemia.

**Synonyms:**

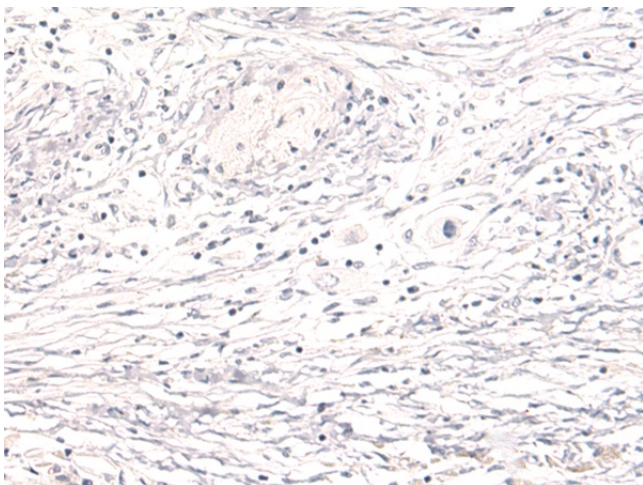
ALPS4; HRAS1; N-ras; NRAS1

**Product images:**


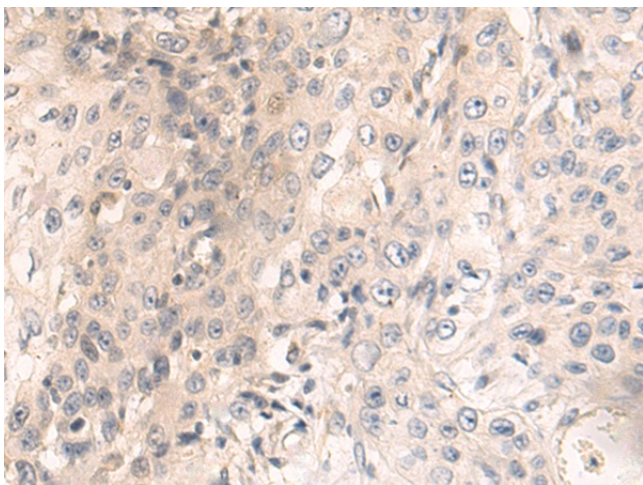
Gel: 10%SDS-PAGE  
 Lysate: 40 µg  
 Lane 1-2: Human cerebella tissue  
 Mouse brain tissue lysates  
 Primary antibody: [TA372916] (NRAS Antibody) at dilution 1/250  
 Secondary antibody: Goat anti rabbit IgG at 1/5000 dilution  
 Exposure time: 1 minute



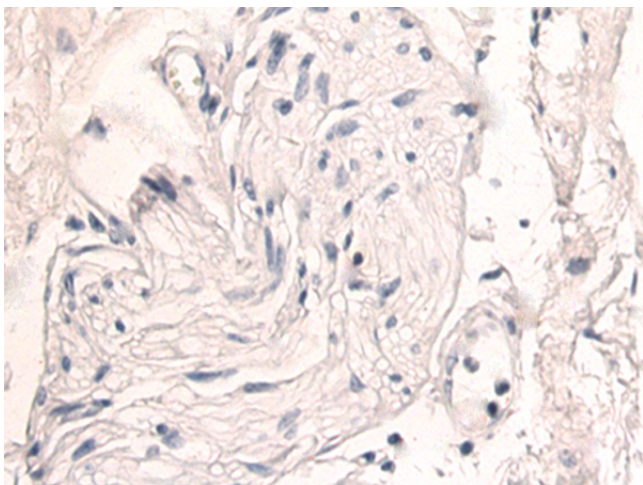
Immunohistochemistry of paraffin-embedded Human breast cancer tissue using [TA372916] (NRAS Antibody) at dilution 1/50 (Original magnification: ×200)



Immunohistochemistry of paraffin-embedded Human breast cancer tissue using [TA372916] (NRAS Antibody) at dilution 1/50, treated with synthetic peptide. (Original magnification: ×200)



Immunohistochemistry of paraffin-embedded Human esophagus cancer tissue using [TA372916] (NRAS Antibody) at dilution 1/50 (Original magnification: ×200)



Immunohistochemistry of paraffin-embedded Human esophagus cancer tissue using [TA372916] (NRAS Antibody) at dilution 1/50, treated with synthetic peptide. (Original magnification: ×200)