

Product datasheet for **TA372911S**

ELOVL5 Rabbit Polyclonal Antibody

Product data:

Product Type:	Primary Antibodies
Applications:	IHC, WB
Recommended Dilution:	WB: 500-2000 WB positive control: Mouse fat tissue, Jurkat cell, RAW264.7 cell, Mouse brain tissue, HeLa cell, Human testis tissue, Mouse adrenal gland tissue lysates IHC: 50-200 Positive control: Human liver cancer Predicted cell location: Cytoplasm and Cell membrane
Reactivity:	Human, Mouse
Host:	Rabbit
Isotype:	IgG
Clonality:	Polyclonal
Immunogen:	Synthetic peptide of human ELOVL5
Formulation:	pH7.4 PBS, 0.05% NaN ₃ , 40% Glycerol
Concentration:	lot specific
Purification:	Antigen affinity purification
Conjugation:	Unconjugated
Storage:	Store at -20°C.
Stability:	1 year
Predicted Protein Size:	35 kDa
Gene Name:	ELOVL fatty acid elongase 5
Database Link:	Entrez Gene 60481 Human Q9NYP7

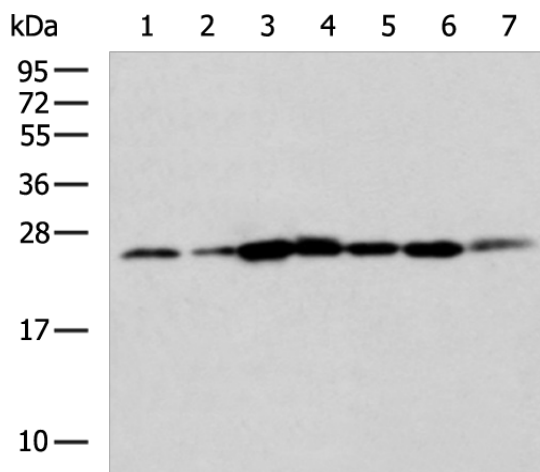
Background: This gene belongs to the ELO family. It is highly expressed in the adrenal gland and testis, and encodes a multi-pass membrane protein that is localized in the endoplasmic reticulum. This protein is involved in the elongation of long-chain polyunsaturated fatty acids. Mutations in this gene have been associated with spinocerebellar ataxia-38 (SCA38). Alternatively spliced transcript variants have been found for this gene.



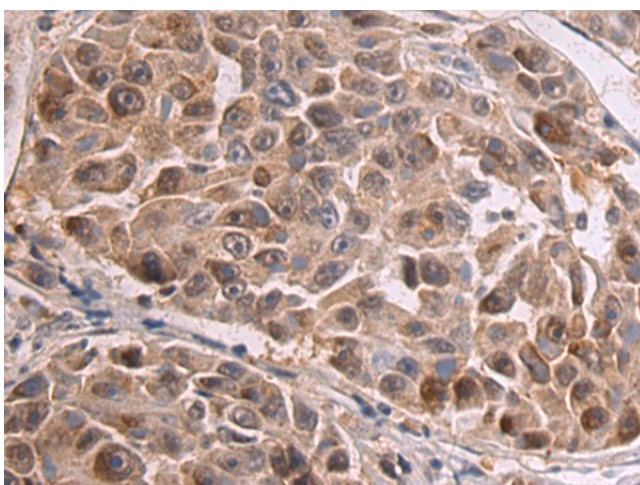
[View online »](#)

Synonyms: dj483K16.1; ELOVL2; HELO1

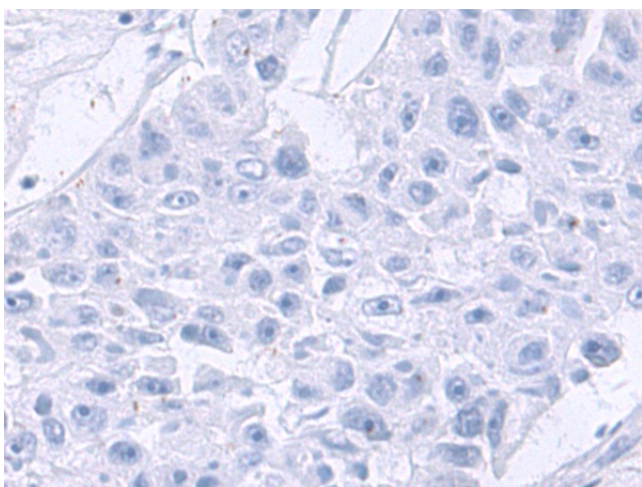
Product images:



Gel: 12%SDS-PAGE
 Lysate: 40 µg
 Lane 1-7: Mouse fat tissue
 Jurkat cell
 RAW264.7 cell
 Mouse brain tissue
 Hela cell
 Human testis tissue
 Mouse adrenal gland tissue lysates
 Primary antibody: [TA372911] (ELOVL5 Antibody) at dilution 1/550
 Secondary antibody: Goat anti rabbit IgG at 1/5000 dilution
 Exposure time: 15 seconds



Immunohistochemistry of paraffin-embedded Human liver cancer tissue using [TA372911] (ELOVL5 Antibody) at dilution 1/50 (Original magnification: ×200)



Immunohistochemistry of paraffin-embedded Human liver cancer tissue using [TA372911] (ELOVL5 Antibody) at dilution 1/50, treated with synthetic peptide. (Original magnification: ×200)