

Product datasheet for **TA372911**

ELOVL5 Rabbit Polyclonal Antibody

Product data:

| | |
|-------------------------|--|
| Product Type: | Primary Antibodies |
| Applications: | IHC, WB |
| Recommended Dilution: | WB: 500-2000 WB positive control: Mouse fat tissue, Jurkat cell, RAW264.7 cell, Mouse brain tissue, HeLa cell, Human testis tissue, Mouse adrenal gland tissue lysates IHC: 50-200 Positive control: Human liver cancer Predicted cell location: Cytoplasm and Cell membrane |
| Reactivity: | Human, Mouse |
| Host: | Rabbit |
| Isotype: | IgG |
| Clonality: | Polyclonal |
| Immunogen: | Synthetic peptide of human ELOVL5 |
| Formulation: | pH7.4 PBS, 0.05% NaN ₃ , 40% Glycerol |
| Concentration: | lot specific |
| Purification: | Antigen affinity purification |
| Conjugation: | Unconjugated |
| Storage: | Store at -20°C. |
| Stability: | 1 year |
| Predicted Protein Size: | 35 kDa |
| Gene Name: | ELOVL fatty acid elongase 5 |
| Database Link: | Entrez Gene 60481 Human Q9NYP7 |

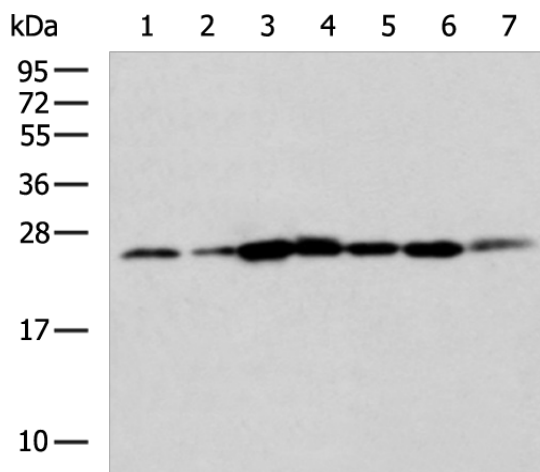
Background: This gene belongs to the ELO family. It is highly expressed in the adrenal gland and testis, and encodes a multi-pass membrane protein that is localized in the endoplasmic reticulum. This protein is involved in the elongation of long-chain polyunsaturated fatty acids. Mutations in this gene have been associated with spinocerebellar ataxia-38 (SCA38). Alternatively spliced transcript variants have been found for this gene.



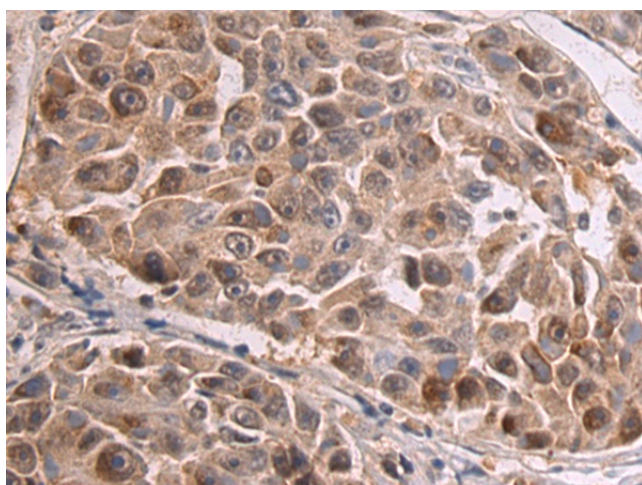
[View online »](#)

Synonyms: dj483K16.1; ELOVL2; HELO1

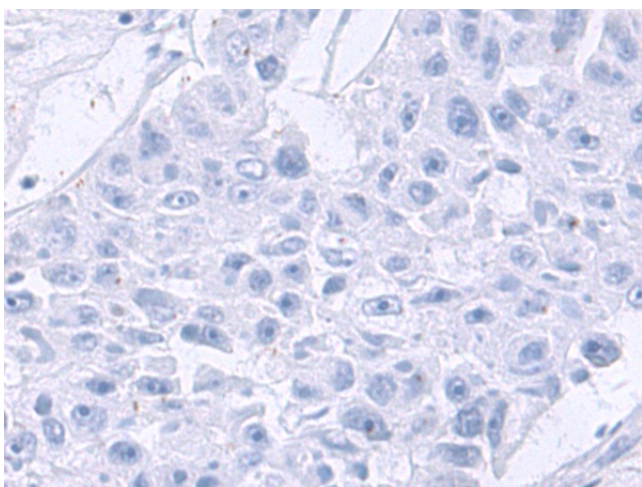
Product images:



Gel: 12%SDS-PAGE
 Lysate: 40 µg
 Lane 1-7: Mouse fat tissue
 Jurkat cell
 RAW264.7 cell
 Mouse brain tissue
 Hela cell
 Human testis tissue
 Mouse adrenal gland tissue lysates
 Primary antibody: TA372911 (ELOVL5 Antibody)
 at dilution 1/550
 Secondary antibody: Goat anti rabbit IgG at
 1/5000 dilution
 Exposure time: 15 seconds



Immunohistochemistry of paraffin-embedded
 Human liver cancer tissue using TA372911
 (ELOVL5 Antibody) at dilution 1/50 (Original
 magnification: x200)



Immunohistochemistry of paraffin-embedded Human liver cancer tissue using TA372911 (ELOVL5 Antibody) at dilution 1/50, treated with synthetic peptide. (Original magnification: ×200)