

Product datasheet for **TA372895S**

Kininogen 1 (KNG1) Rabbit Polyclonal Antibody

Product data:

Product Type:	Primary Antibodies
Applications:	WB
Recommended Dilution:	WB: 500-2000 WB positive control: Mouse kidney tissue lysate
Reactivity:	Human, Mouse
Host:	Rabbit
Isotype:	IgG
Clonality:	Polyclonal
Immunogen:	Synthetic peptide of human KNG1
Formulation:	pH7.4 PBS, 0.05% NaN ₃ , 40% Glycerol
Concentration:	lot specific
Purification:	Antigen affinity purification
Conjugation:	Unconjugated
Storage:	Store at -20°C.
Stability:	1 year
Predicted Protein Size:	72 kDa
Gene Name:	kininogen 1
Database Link:	Entrez Gene 3827 Human P01042



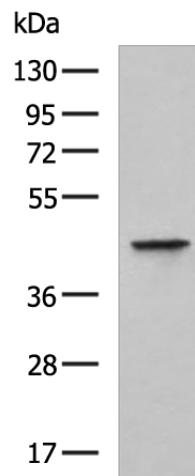
[View online »](#)

Background:

This gene uses alternative splicing to generate two different proteins- high molecular weight kininogen (HMWK) and low molecular weight kininogen (LMWK). HMWK is essential for blood coagulation and assembly of the kallikrein-kinin system. Also, bradykinin, a peptide causing numerous physiological effects, is released from HMWK. Bradykinin also functions as an antimicrobial peptide with antibacterial and antifungal activity. In contrast to HMWK, LMWK is not involved in blood coagulation. Infection with severe acute respiratory syndrome coronavirus 2 (SARS-CoV-2) reduces or depletes angiotensin converting enzyme 2 (ACE2), which results in an increase in levels of des-Arg(9)-bradykinin, a bioactive metabolite of bradykinin that is associated with lung injury and inflammation. Three transcript variants encoding different isoforms have been found for this gene.

Synonyms:

BDK; bradykinin; HMWK; kininogen; KNG

Product images:

Gel: 8%SDS-PAGE
Lysate: 40 µg
Lane: Mouse kidney tissue lysate
Primary antibody: [TA372895] (KNG1 Antibody) at dilution 1/300
Secondary antibody: Goat anti rabbit IgG at 1/5000 dilution
Exposure time: 5 minutes