

## Product datasheet for **TA372886S**

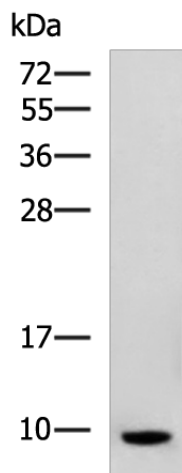
### Spink1 Rabbit Polyclonal Antibody

#### Product data:

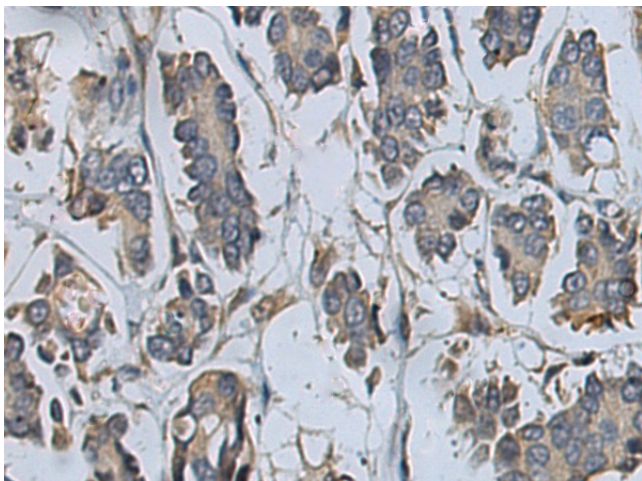
Product Type:	Primary Antibodies
Applications:	IHC, WB
Recommended Dilution:	WB: 500-2000 WB positive control: Rat pancreas tissue lysate IHC: 25-50 Positive control: Human colorectal cancer Predicted cell location: Secreted
Reactivity:	Human, Rat
Host:	Rabbit
Isotype:	IgG
Clonality:	Polyclonal
Immunogen:	Synthetic peptide of Rat Spink1
Formulation:	pH7.4 PBS, 0.05% NaN <sub>3</sub> , 40% Glycerol
Concentration:	lot specific
Purification:	Antigen affinity purification
Conjugation:	Unconjugated
Storage:	Store at -20°C.
Stability:	1 year
Predicted Protein Size:	9 kDa
Gene Name:	serine peptidase inhibitor, Kazal type 3
Database Link:	<a href="#">Entrez Gene 24833 Rat P09655</a>
Background:	acts as a trypsin inhibitor to protect the pancreas from premature activation of pancreatic juice; has additional monitor peptide activity to induce cholecystokinin release in the intestine.
Synonyms:	p12; Psti-1; Spink1; Tilp



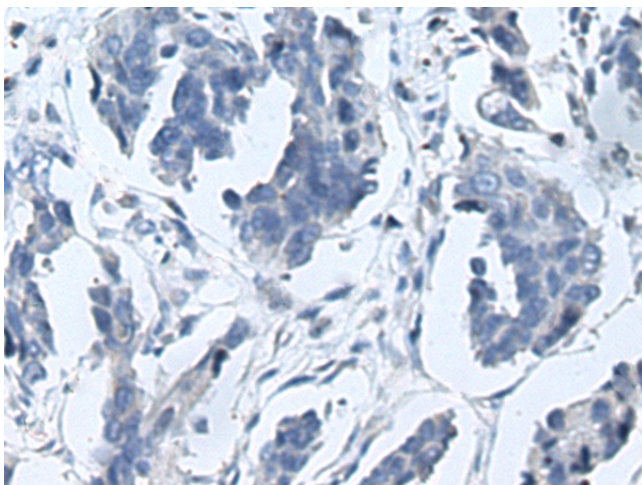
[View online »](#)

**Product images:**

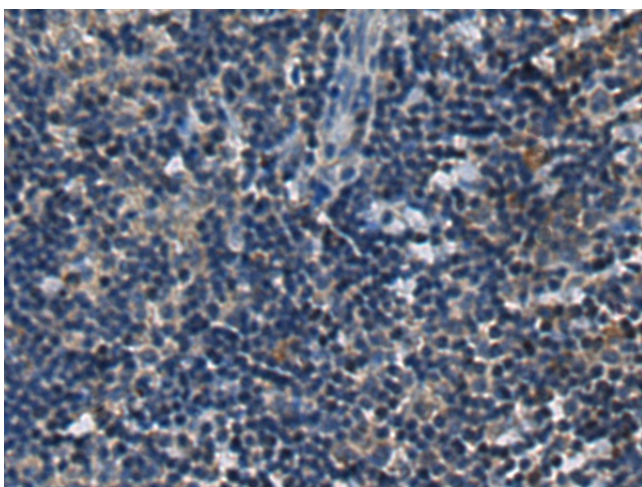
Gel: 12%SDS-PAGE  
Lysate: 40  $\mu$ g  
Lane: Rat pancreas tissue lysate  
Primary antibody: [TA372886] (Spink1 Antibody) at dilution 1/400  
Secondary antibody: Goat anti rabbit IgG at 1/5000 dilution  
Exposure time: 4 minutes



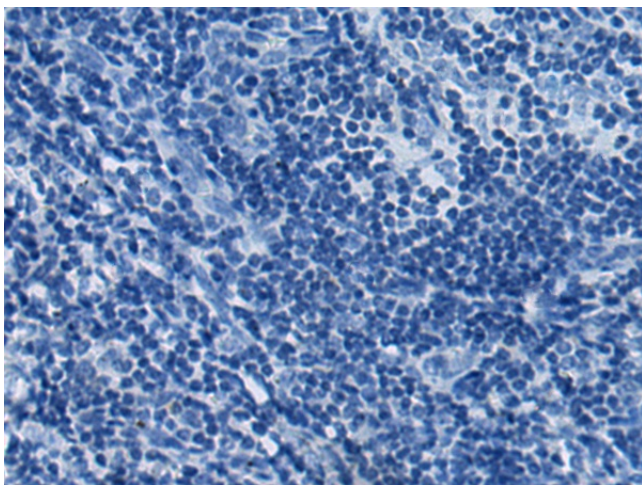
Immunohistochemistry of paraffin-embedded Human colorectal cancer tissue using [TA372886] (Spink1 Antibody) at dilution 1/20 (Original magnification:  $\times$ 200)



Immunohistochemistry of paraffin-embedded Human colorectal cancer tissue using [TA372886] (Spink1 Antibody) at dilution 1/20, treated with synthetic peptide. (Original magnification:  $\times 200$ )



Immunohistochemistry of paraffin-embedded Human tonsil tissue using [TA372886] (Spink1 Antibody) at dilution 1/20 (Original magnification:  $\times 200$ )



Immunohistochemistry of paraffin-embedded Human tonsil tissue using [TA372886] (Spink1 Antibody) at dilution 1/20, treated with synthetic peptide. (Original magnification:  $\times 200$ )