

Product datasheet for **TA372886**

Spink1 Rabbit Polyclonal Antibody

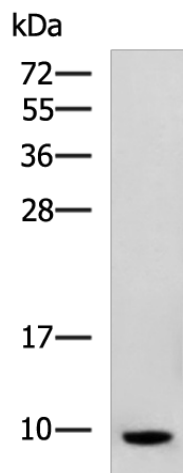
Product data:

Product Type:	Primary Antibodies
Applications:	IHC, WB
Recommended Dilution:	WB: 500-2000 WB positive control: Rat pancreas tissue lysate IHC: 25-50 Positive control: Human colorectal cancer Predicted cell location: Secreted
Reactivity:	Human, Rat
Host:	Rabbit
Isotype:	IgG
Clonality:	Polyclonal
Immunogen:	Synthetic peptide of Rat Spink1
Formulation:	pH7.4 PBS, 0.05% NaN ₃ , 40% Glycerol
Concentration:	lot specific
Purification:	Antigen affinity purification
Conjugation:	Unconjugated
Storage:	Store at -20°C.
Stability:	1 year
Predicted Protein Size:	9 kDa
Gene Name:	serine peptidase inhibitor, Kazal type 3
Database Link:	Entrez Gene 24833 Rat P09655
Background:	acts as a trypsin inhibitor to protect the pancreas from premature activation of pancreatic juice; has additional monitor peptide activity to induce cholecystokinin release in the intestine.
Synonyms:	p12; Psti-1; Spink1; Tilp

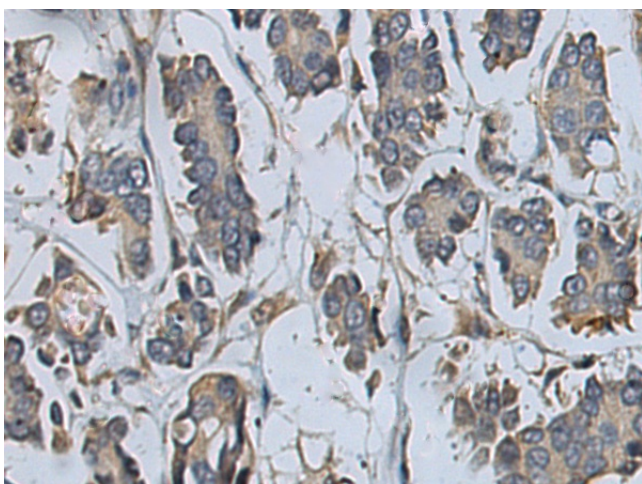


[View online »](#)

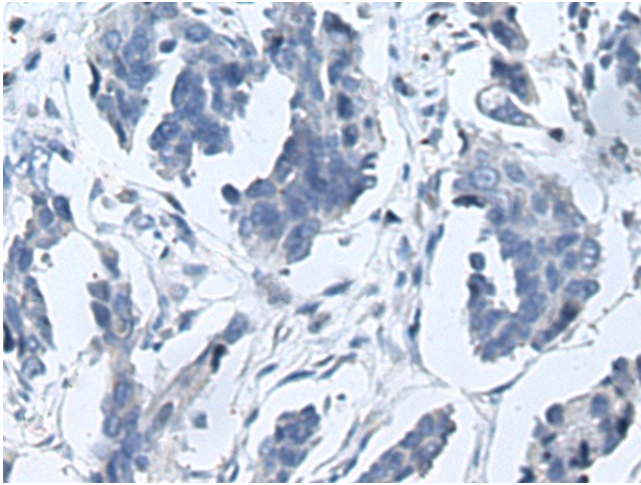
Product images:



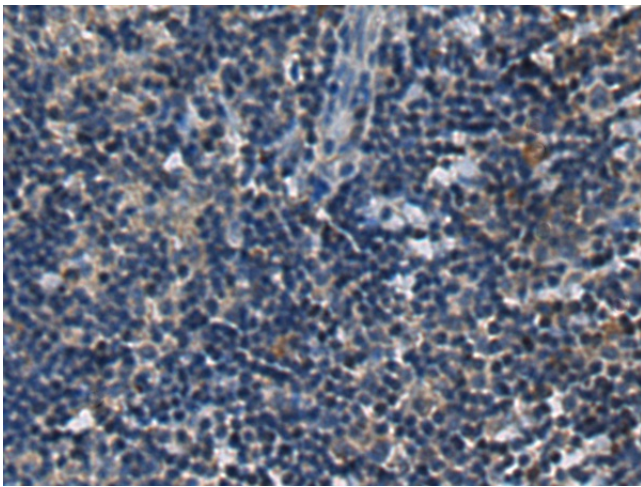
Gel: 12%SDS-PAGE
Lysate: 40 μ g
Lane: Rat pancreas tissue lysate
Primary antibody: TA372886 (Spink1 Antibody) at dilution 1/400
Secondary antibody: Goat anti rabbit IgG at 1/5000 dilution
Exposure time: 4 minutes



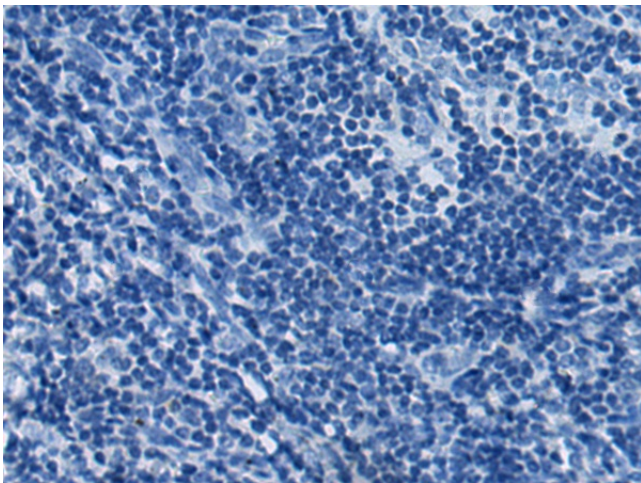
Immunohistochemistry of paraffin-embedded Human colorectal cancer tissue using TA372886 (Spink1 Antibody) at dilution 1/20 (Original magnification: \times 200)



Immunohistochemistry of paraffin-embedded Human colorectal cancer tissue using TA372886 (Spink1 Antibody) at dilution 1/20, treated with synthetic peptide. (Original magnification: ×200)



Immunohistochemistry of paraffin-embedded Human tonsil tissue using TA372886 (Spink1 Antibody) at dilution 1/20 (Original magnification: ×200)



Immunohistochemistry of paraffin-embedded Human tonsil tissue using TA372886 (Spink1 Antibody) at dilution 1/20, treated with synthetic peptide. (Original magnification: ×200)