

## Product datasheet for **TA372880**

### **RUNX2 Rabbit Polyclonal Antibody**

#### **Product data:**

Product Type:	Primary Antibodies
Applications:	IHC, WB
Recommended Dilution:	WB: 500-2000 WB positive control: Jurkat cell lysate IHC: 50-100 Positive control: Human esophagus cancer Predicted cell location: Nucleus
Reactivity:	Human, Mouse
Host:	Rabbit
Isotype:	IgG
Clonality:	Polyclonal
Immunogen:	Synthetic peptide of human RUNX2
Formulation:	pH7.4 PBS, 0.05% NaN <sub>3</sub> , 40% Glycerol
Concentration:	lot specific
Purification:	Antigen affinity purification
Conjugation:	Unconjugated
Storage:	Store at -20°C.
Stability:	1 year
Predicted Protein Size:	57 kDa
Gene Name:	runt related transcription factor 2
Database Link:	<a href="#">Entrez Gene 860 Human Q13950</a>



[View online »](#)

**Background:**

This gene is a member of the RUNX family of transcription factors and encodes a nuclear protein with an Runt DNA-binding domain. This protein is essential for osteoblastic differentiation and skeletal morphogenesis and acts as a scaffold for nucleic acids and regulatory factors involved in skeletal gene expression. The protein can bind DNA both as a monomer or, with more affinity, as a subunit of a heterodimeric complex. Two regions of potential trinucleotide repeat expansions are present in the N-terminal region of the encoded protein, and these and other mutations in this gene have been associated with the bone development disorder cleidocranial dysplasia (CCD). Transcript variants that encode different protein isoforms result from the use of alternate promoters as well as alternate splicing.

**Synonyms:**

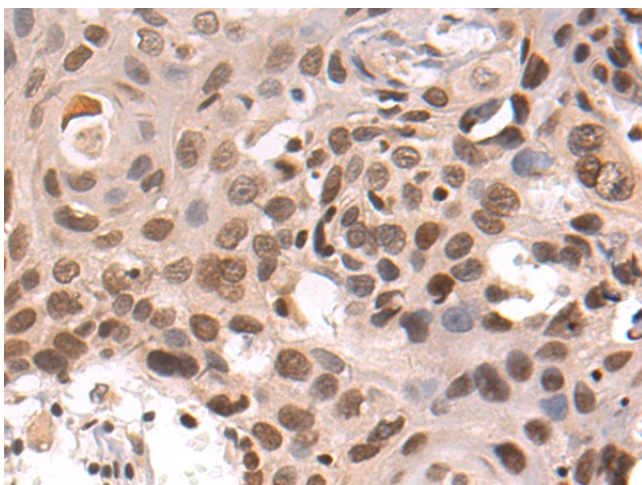
AML3; CBF-alpha-1; CBFA1; CCD; CCD1; MGC120022; MGC120023; OSF-2; OSF2; PEA2aA; PEBP2A; PEBP2A1; PEBP2A2; PEBP2aA; PEBP2aA1

**Product images:**

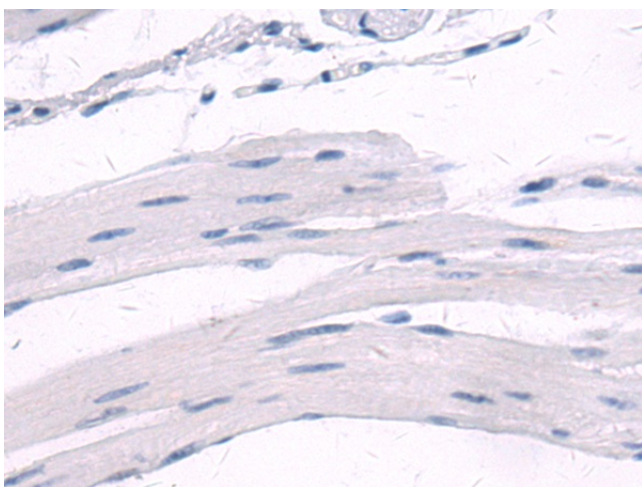
kDa  
130 —  
95 —  
72 —  
55 —  
36 —  
28 —  
17 —



Gel: 8%SDS-PAGE  
Lysate: 40 µg  
Lane: Jurkat cell lysate  
Primary antibody: TA372880 (RUNX2 Antibody) at dilution 1/400  
Secondary antibody: Goat anti rabbit IgG at 1/5000 dilution  
Exposure time: 2 minutes



Immunohistochemistry of paraffin-embedded Human esophagus cancer tissue using TA372880 (RUNX2 Antibody) at dilution 1/50 (Original magnification: x200)



Immunohistochemistry of paraffin-embedded Human esophagus cancer tissue using TA372880 (RUNX2 Antibody) at dilution 1/50, treated with synthetic peptide. (Original magnification: ×200)