

Product datasheet for **TA372879S**

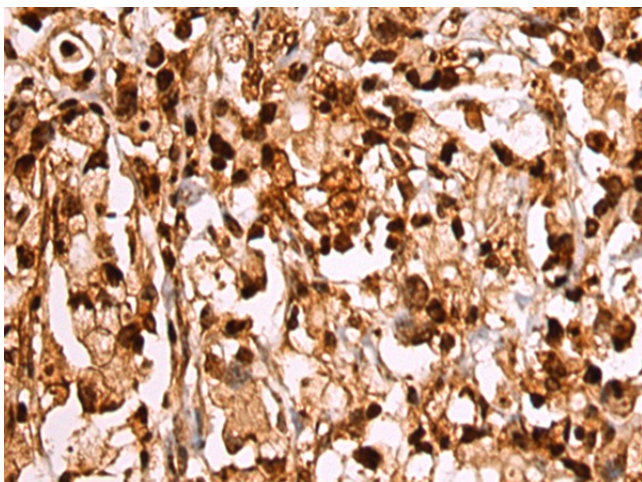
RUNX1 Rabbit Polyclonal Antibody

Product data:

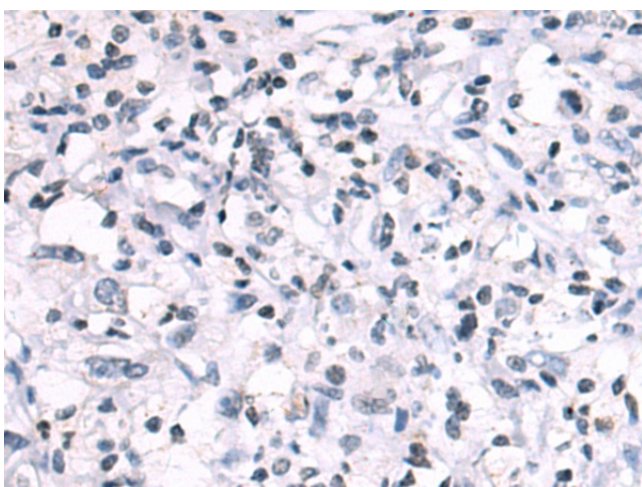
Product Type:	Primary Antibodies
Applications:	IHC
Recommended Dilution:	IHC: 50-100 Positive control: Human gastric cancer Predicted cell location: Cytoplasm and Nucleus
Reactivity:	Human, Mouse, Rat
Host:	Rabbit
Isotype:	IgG
Clonality:	Polyclonal
Immunogen:	Synthetic peptide of human RUNX1
Formulation:	pH7.4 PBS, 0.05% NaN ₃ , 40% Glycerol
Concentration:	lot specific
Purification:	Antigen affinity purification
Conjugation:	Unconjugated
Storage:	Store at -20°C.
Stability:	1 year
Gene Name:	runt related transcription factor 1
Database Link:	Entrez Gene 861 Human Q01196
Background:	Core binding factor (CBF) is a heterodimeric transcription factor that binds to the core element of many enhancers and promoters. The protein encoded by this gene represents the alpha subunit of CBF and is thought to be involved in the development of normal hematopoiesis. Chromosomal translocations involving this gene are well-documented and have been associated with several types of leukemia. Three transcript variants encoding different isoforms have been found for this gene.
Synonyms:	AML1; AMLCR1; CBF-alpha-2; CBFA2; EVI-1; OTTHUMP00000108697; PEBP2A2; PEBP2aB



[View online »](#)

Product images:

Immunohistochemistry of paraffin-embedded Human gastric cancer tissue using [TA372879] (RUNX1 Antibody) at dilution 1/35 (Original magnification: $\times 200$)



Immunohistochemistry of paraffin-embedded Human gastric cancer tissue using [TA372879] (RUNX1 Antibody) at dilution 1/35, treated with synthetic peptide. (Original magnification: $\times 200$)