

## Product datasheet for **TA372873S**

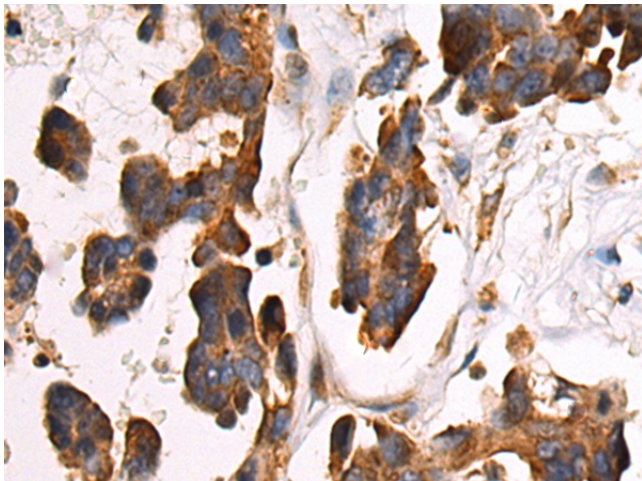
### ARRDC4 Rabbit Polyclonal Antibody

#### Product data:

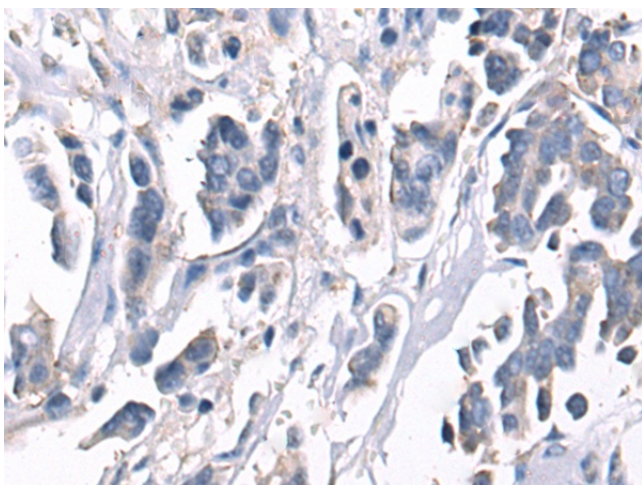
Product Type:	Primary Antibodies
Applications:	IHC
Recommended Dilution:	IHC: 50-100 Positive control: Human colorectal cancer Predicted cell location: Cytoplasm
Reactivity:	Human, Mouse
Host:	Rabbit
Isotype:	IgG
Clonality:	Polyclonal
Immunogen:	Synthetic peptide of human ARRDC4
Formulation:	pH7.4 PBS, 0.05% NaN <sub>3</sub> , 40% Glycerol
Concentration:	lot specific
Purification:	Antigen affinity purification
Conjugation:	Unconjugated
Storage:	Store at -20°C.
Stability:	1 year
Gene Name:	arrestin domain containing 4
Database Link:	<a href="#">Entrez Gene 91947 Human Q8NCT1</a>
Background:	Functions as an adapter recruiting ubiquitin-protein ligases to their specific substrates (By similarity). Plays a role in endocytosis of activated G protein-coupled receptors (GPCRs) (Probable). Through an ubiquitination-dependent mechanism plays also a role in the incorporation of SLC11A2 into extracellular vesicles (By similarity). May play a role in glucose uptake (PubMed:19605364).
Synonyms:	FLJ36045



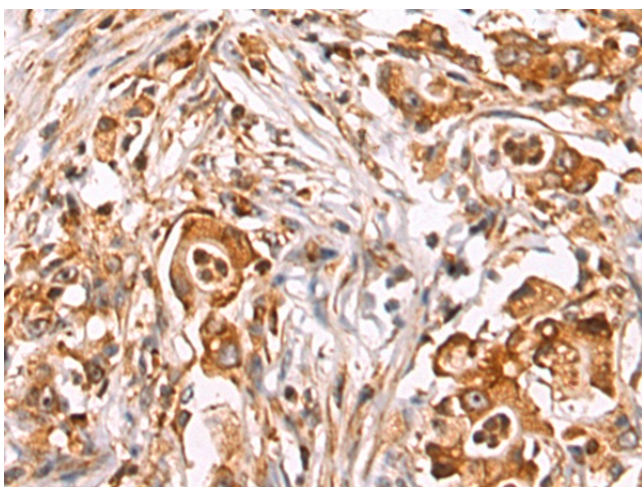
[View online »](#)

**Product images:**

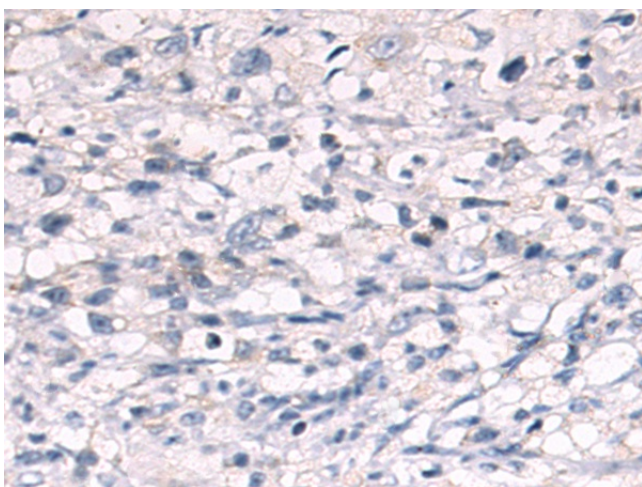
Immunohistochemistry of paraffin-embedded Human colorectal cancer tissue using [TA372873] (ARRDC4 Antibody) at dilution 1/35 (Original magnification:  $\times 200$ )



Immunohistochemistry of paraffin-embedded Human colorectal cancer tissue using [TA372873] (ARRDC4 Antibody) at dilution 1/35, treated with synthetic peptide. (Original magnification:  $\times 200$ )



Immunohistochemistry of paraffin-embedded Human gastric cancer tissue using [TA372873] (ARRDC4 Antibody) at dilution 1/35 (Original magnification:  $\times 200$ )



Immunohistochemistry of paraffin-embedded Human gastric cancer tissue using [TA372873] (ARRDC4 Antibody) at dilution 1/35, treated with synthetic peptide. (Original magnification:  $\times 200$ )